



State of Intermediate School Glassboro, NJ

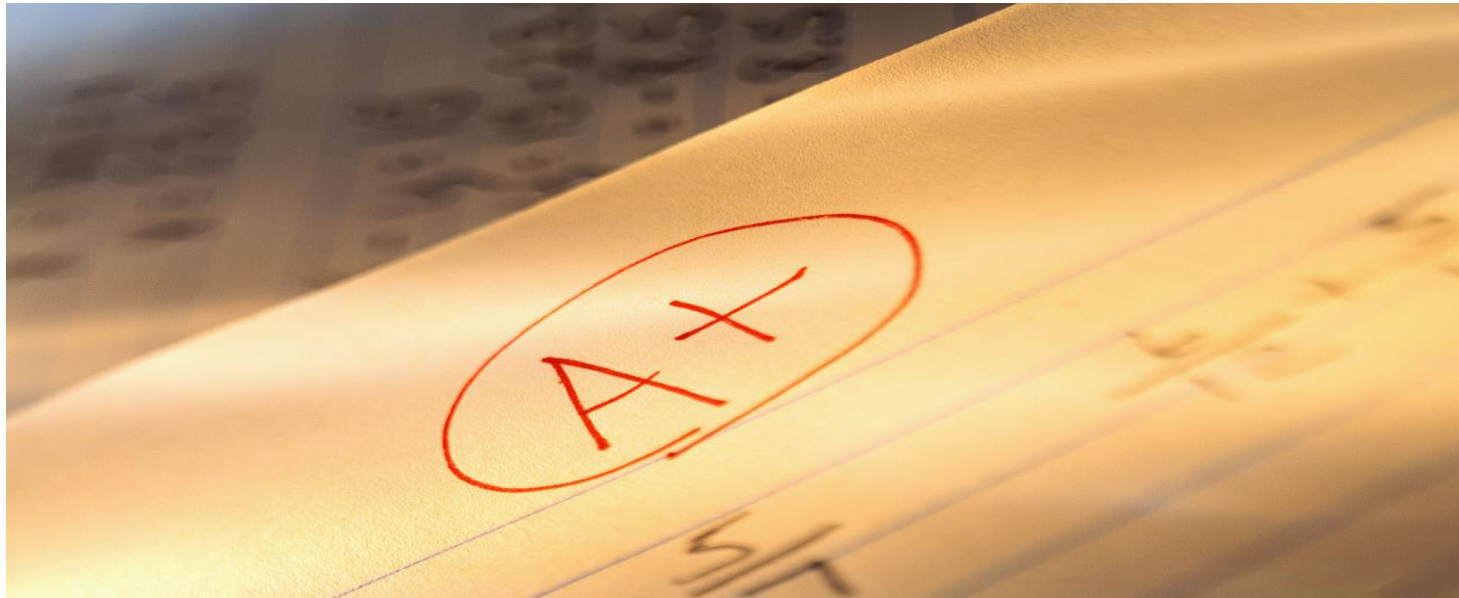
Presentation by:
Mr. Kriston Matthews

Achievements

- Focus school designation
- 2013 Named a top 10 school
- 2014 Highest scores in Glassboro Intermediate School History
- Jersey Can filmed GIS teachers in regards to the common core

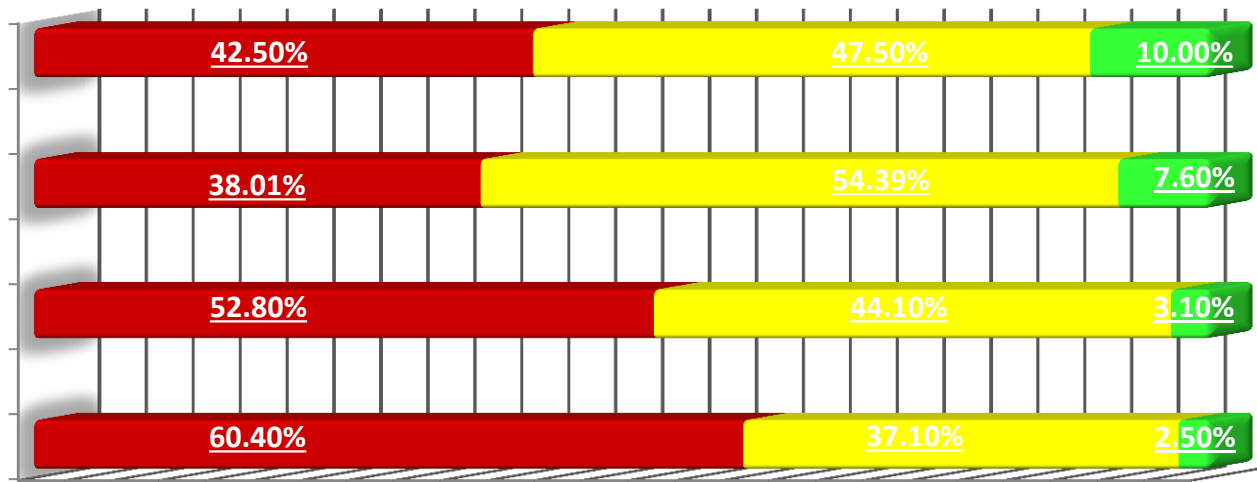
Jersey Can Videos

- <https://vimeo.com/perlowproductions/review/107230726/8a33a54f1b>
- <https://vimeo.com/perlowproductions/review/107230727/bd56564248>
- <https://vimeo.com/perlowproductions/review/107230725/7f014c3038>

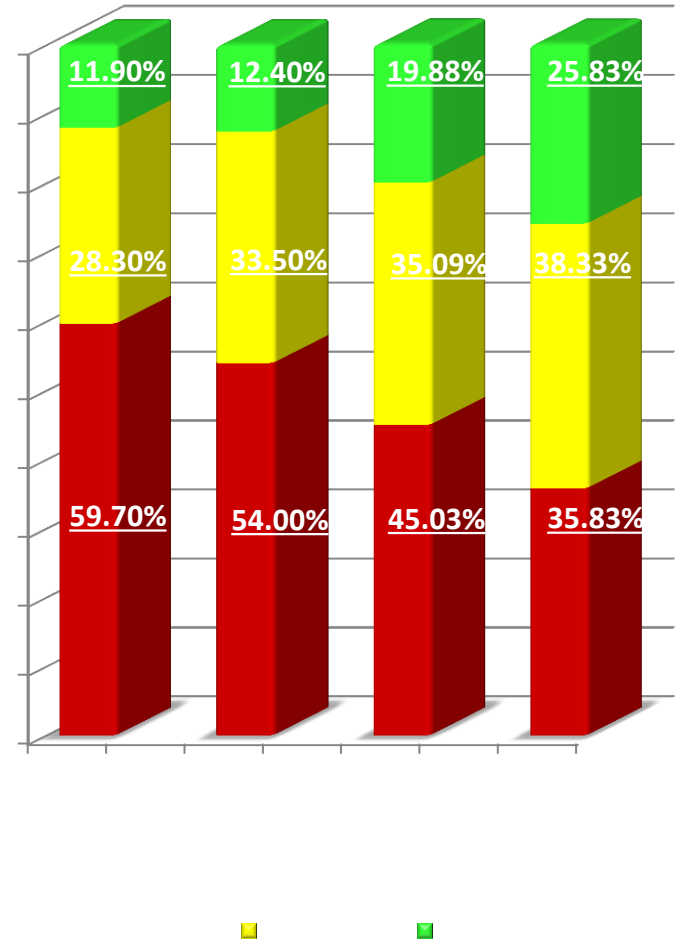


**Glassboro Public Schools
spring 2014 Testing summaries as
follows:**

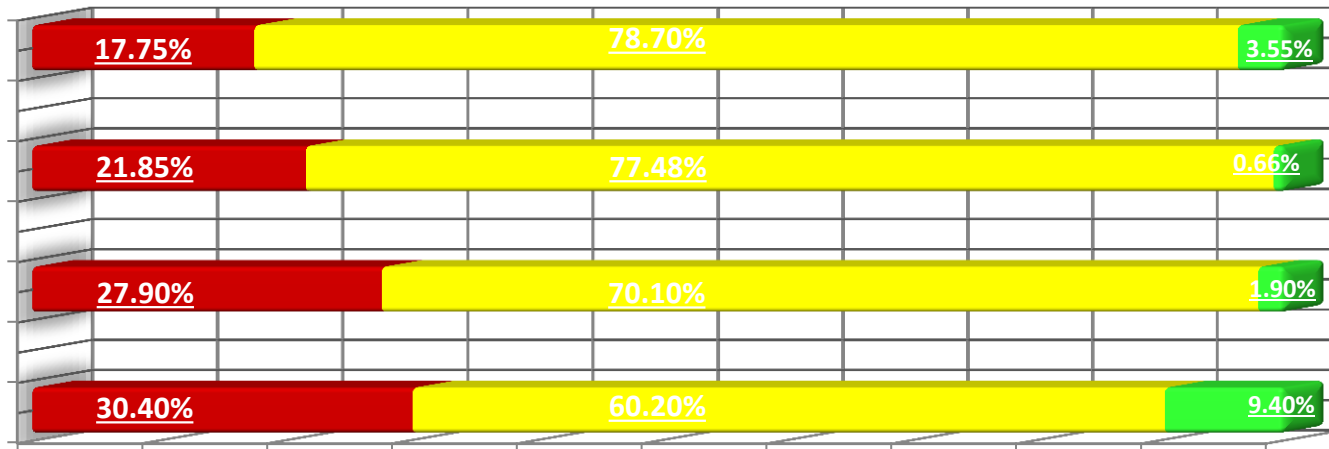
<u>7th Grade Language Arts</u>	% of Advanced Proficient and Proficient Students							
	2008	2009	2010	2011	2012	2013	2014	-/+
Total Students	58.9	60.2	49.4	39.6	47.20	61.99	57.5	-4.49
General Education Students	72.8	70.6	62.7	49.6	56.20	70.07	70.1	0.03
Special Education Students	6.7	15.4	8.9	6.3	12.1	29.41	4.35	-25.06
Female	64	64.6	52	43.4	45.2	67.95	67.92	-0.03
Male	52.7	56	46.7	36.1	48.9	56.99	49.25	-7.74
Black	36.2	47.2	37.3	27	28.6	43.64	27.91	-15.73
White	73.8	75	57.3	53.2	61.9	75.86	83.93	8.07
Economically Disadvantaged	31.7	43.1	36.4	14.3	30.4	37.5	39.39	1.89
Non Economically Disadvantaged	68.4	67	60.4	59.5	63.4	79.8	79.63	-0.17

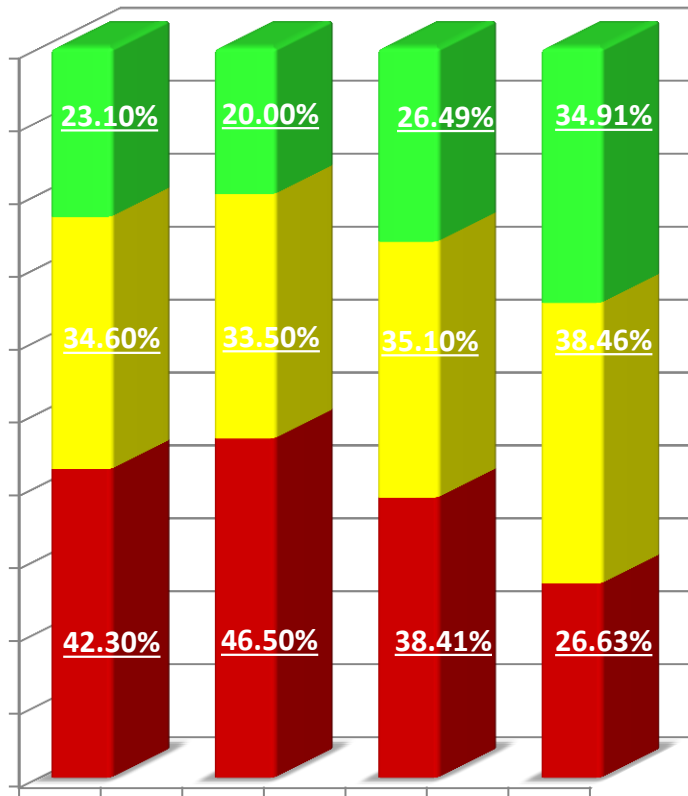


<u>7th Grade Math</u>	% of Advanced Proficient & Proficient Students							
	2008	2009	2010	2011	2012	2013	2014	-/+
Total Students	51.9	53.3	44.1	40.2	48.3	54.97	64.17	9.20
General Education Students	63.2	61	55.6	52	59.32	62.77	74.23	11.46
Special Education Students	10	20	8.9	0	3.45	23.53	21.74	-1.79
Female	57	53.7	40.8	40.8	51.47	56.41	69.81	13.4
Male	45.9	53	47.8	39.8	45.57	53.76	59.7	5.94
Black	34.5	30.7	23.9	23.8	25	36.36	34.88	-1.48
White	67.5	75	56.3	53.2	65.28	67.82	91.07	23.25
Economically Disadvantaged	29.2	26	30.6	20	30	31.94	46.97	15.03
Non Economically Disadvantaged	59.8	65.3	55.4	56.2	64.94	71.72	85.19	13.47



<u>8th Grade Language Arts</u>	% of Advanced Proficient and Proficient Students							
	2008	2009	2010	2011	2012	2013	2014	-/+
Total Students	70.4	71.9	73.6	69.6	72.	78.15	82.25	4.10
General Education Students	79.6	87.4	83.6	85.8	86.24	88.43	92.7	4.27
Special Education Students	29.6	19.4	30.8	23.4	25.7	36.67	37.5	0.83
Female	75.1	78.6	80.7	70	75	78.57	83.54	4.97
Male	66.7	63.8	66.3	69.2	71.09	77.78	81.11	3.33
Black	57.4	58.2	59.3	55.1	63.3	65.52	76.36	10.84
White	80	81.5	92.1	77.7	81.4	84.	85.23	1.23
Economically Disadvantaged	44.2	56.8	55.2	51.3	62.1	66.67	72.86	6.19
Non Economically Disadvantaged	79.8	78	86.5	82.8	79.5	87.80	88.89	1.09





<u>8th Grade Mathematics</u>	% of Advanced Proficient & Proficient Students							
	2008	2009	2010	2011	2012	2013	2014	-/+
Total Students	49.3	64.3	51	57.7	54.29	61.59	73.37	11.78
General Education Students	59.1	78	58.9	74.6	68.81	71.9	81.75	9.85
Special Education Students	3.7	10	15.3	10.7	3.23	20.	37.5	17.5
Female	48.8	67.8	44.6	52.8	56.25	62.86	73.33	10.47
Male	50.6	59.7	57.6	62.7	52.63	60.49	73.42	12.93
Black	32.7	49.1	31.5	43.1	34.62	37.93	54.55	16.62
White	60	75.3	69.3	65.6	70.42	78.67	85.23	6.56
Economically Disadvantaged	23.2	44.2	26.9	40.7	38.6	43.48	61.43	17.95
Non Economically Disadvantaged	58.9	72.2	67.8	69.8	65.06	76.83	81.82	4.99

Curriculum Interventions

- Model Curriculum
- Standards based benchmarks in ELA and Math
- Common Planning

Innovated Programs

- Renaissance
- Student Government Association
- PBS-Positive Behavioral Support
- GLOW/Building Men
- Inclusive School Initiative
- Lead Away Program
- Reflective teachers and practitioners

Community Involvement

Student Government is dedicated to community and reaches out to all citizens of Glassboro.

- ❖ Food Drive
- ❖ Grandparents Gone Wired
- ❖ Movie Nights
- ❖ Library Awareness/Book Donations



School Involvement

Ways in which Student Government Association currently builds BULLDOG PRIDE:

- ❖ Spirit Days
- ❖ African American Assembly
- ❖ Participation in NJ Ask Pep Rally
- ❖ Grade Challenges
- ❖ Battle of the Boards
- ❖ Team Building Trip
- ❖ Anti-Bullying Campaign
- ❖ Drug Awareness Initiative
- ❖ Eighth Grade Dance
- ❖ School Newsletter

RENAISSANCE REWARDS

- Anyone who earns a Renaissance card will be eligible for many different rewards and celebrations.
- These celebrations will be determined with YOUR input through SGA.
- What are YOU willing to work for?

