

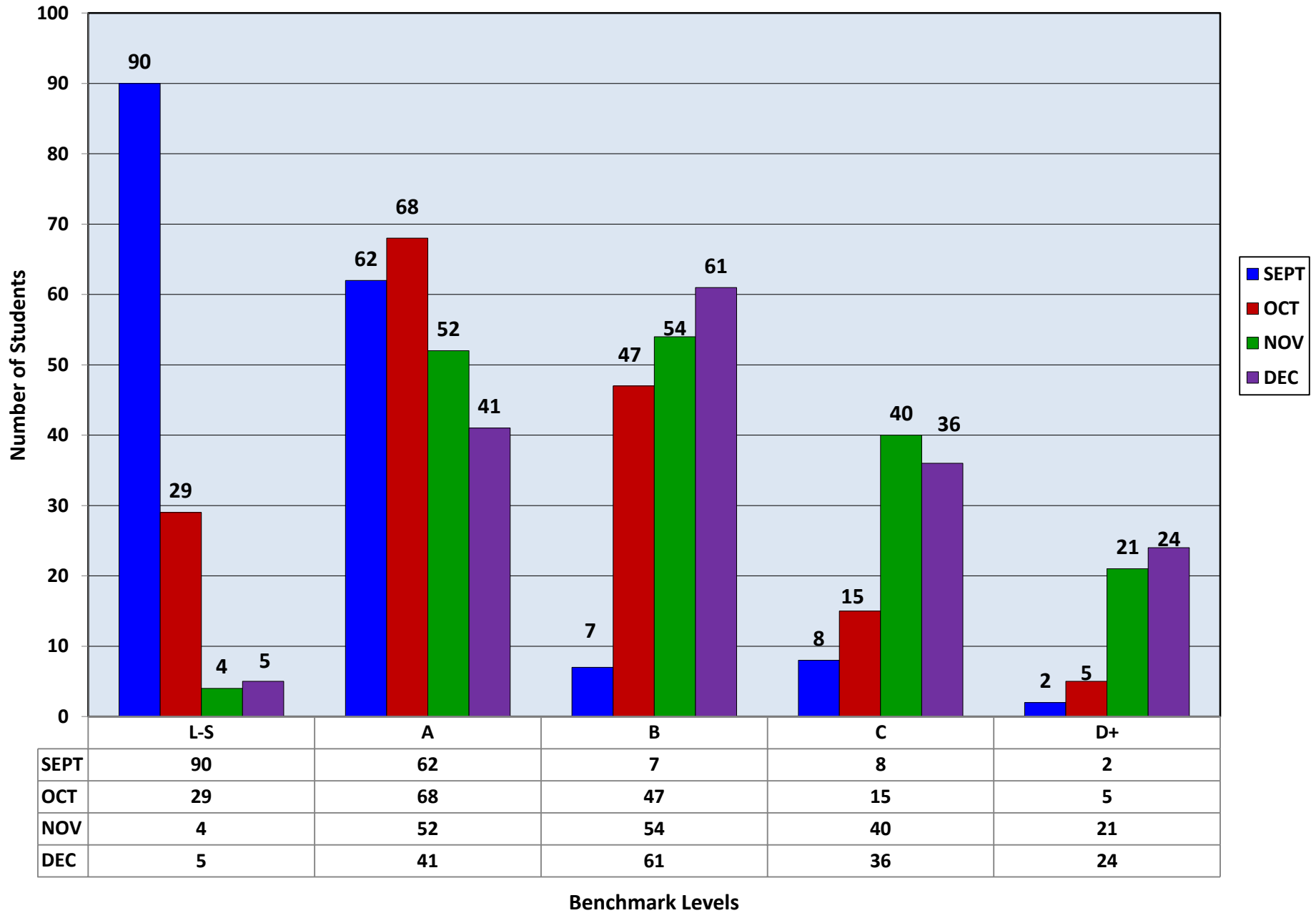
# **F&P Benchmark Levels**

## **What to Look For**

<b>Ideal Benchmark Levels</b>	<b>Applicable Grade</b>
<b>A-D</b>	<b>Kindergarten</b>
<b>E-J</b>	<b>1<sup>st</sup> Grade</b>
<b>K-N</b>	<b>2<sup>nd</sup> Grade</b>
<b>N-P</b>	<b>3<sup>rd</sup> Grade</b>
<b>Q-T</b>	<b>4<sup>th</sup> Grade</b>
<b>T-W</b>	<b>5<sup>th</sup> Grade</b>
<b>W-Z</b>	<b>6<sup>th</sup> Grade</b>
<b>Z</b>	<b>7<sup>th</sup>-8<sup>th</sup> Grade</b>
<b>Z+</b>	<b>High School/Adult</b>

# J. Harvey Rodgers Data

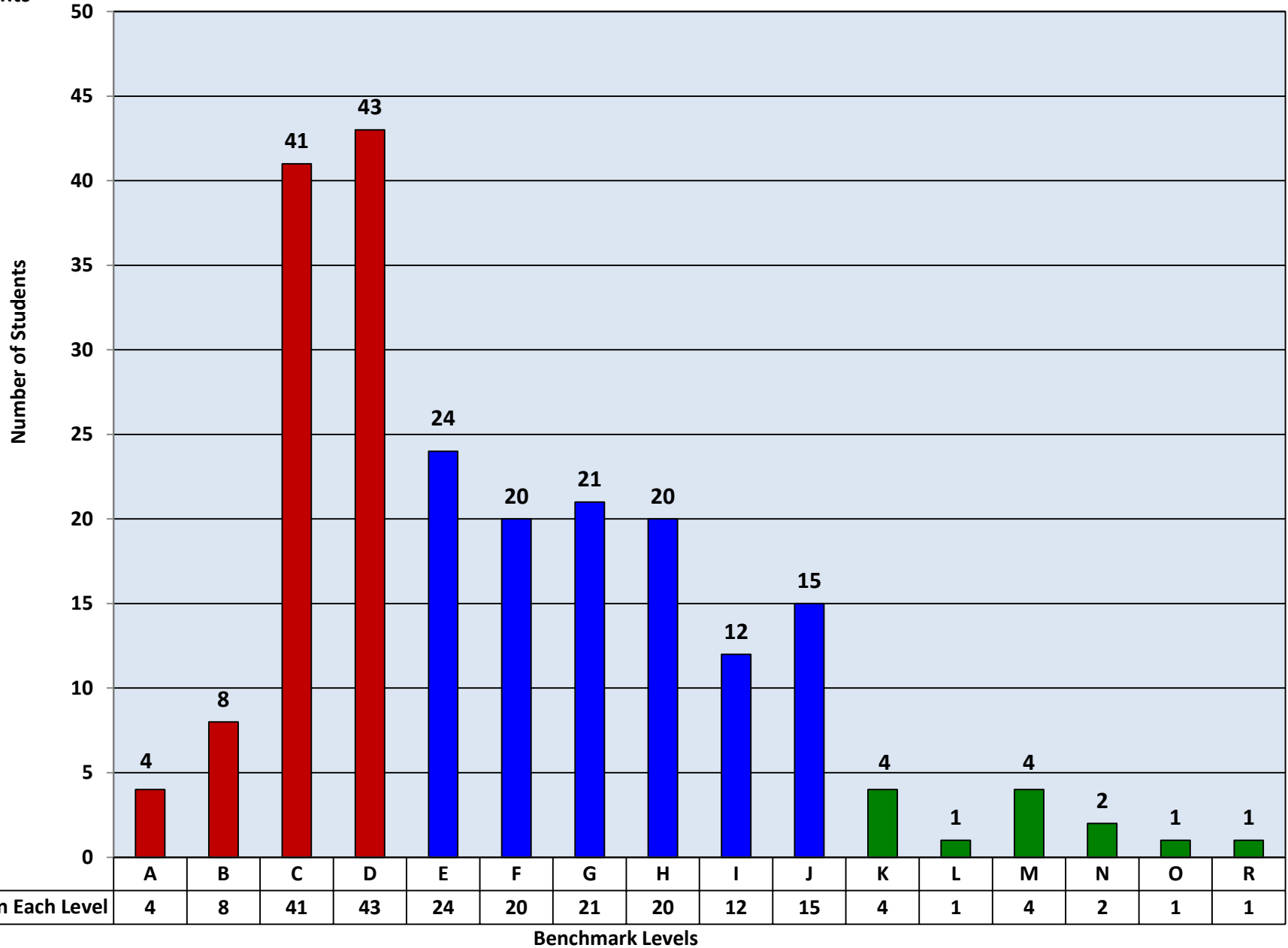
# 2013-14 F&P Levels: Growth



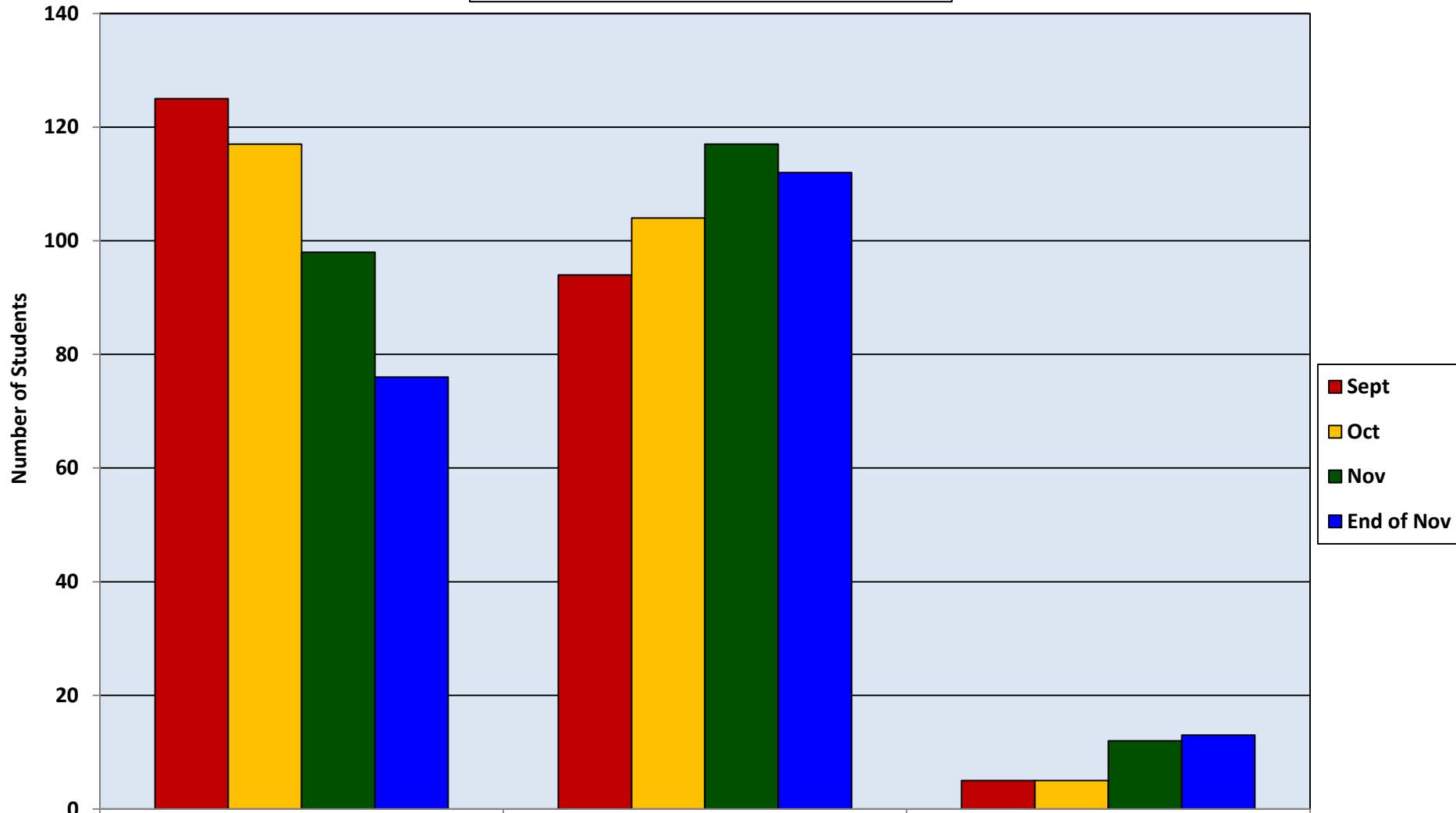
# **1<sup>st</sup> Grade Benchmark Data**

**\*This data  
pulled from  
221 total  
students**

## **1st Grade Benchmark Levels A-R By the End of November**



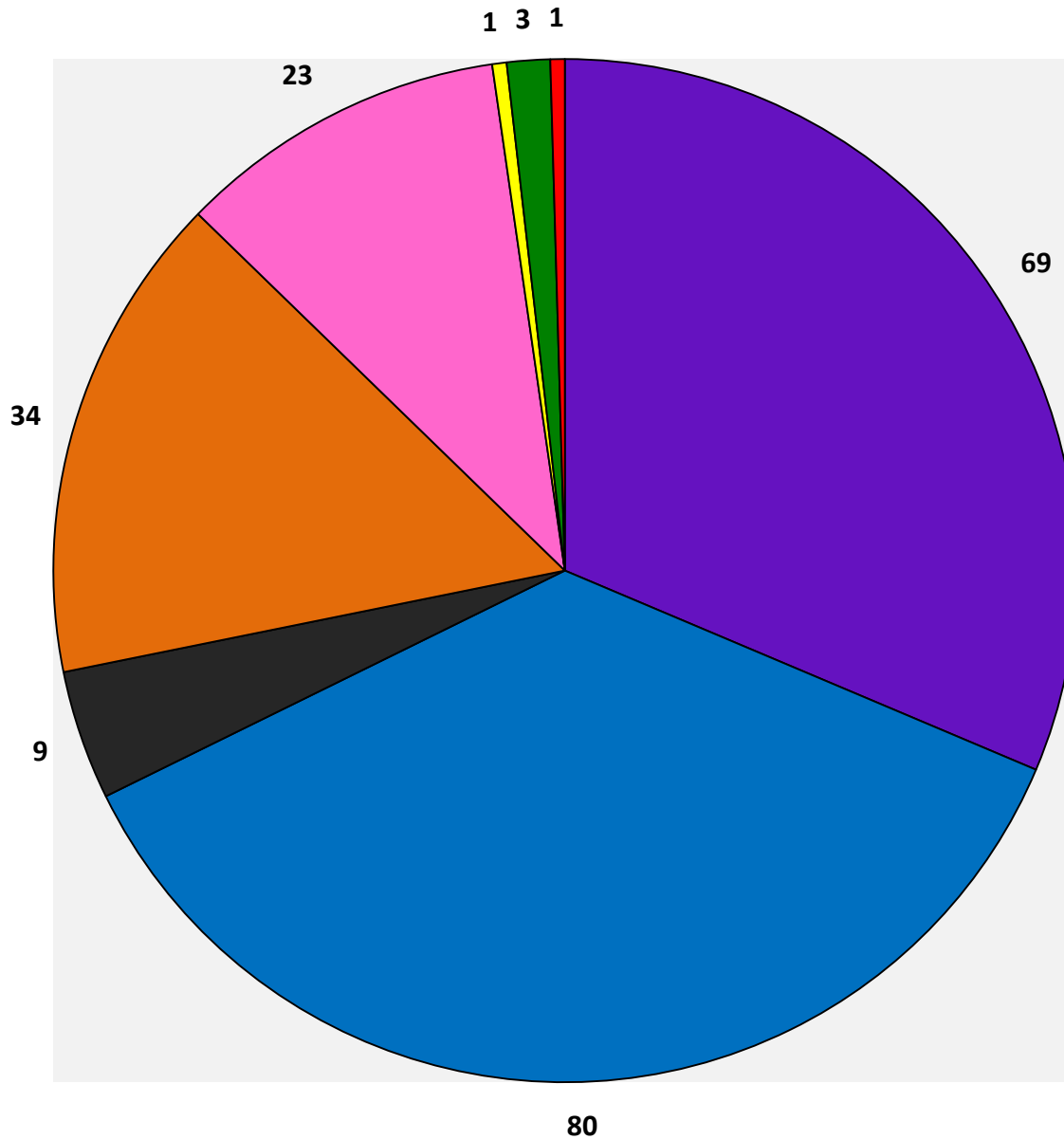
# 1st Grade Benchmark Comparison September-End of November



	A-D	E-J	K-R
Sept	125	94	5
Oct	117	104	5
Nov	98	117	12
End of Nov	76	112	13

Benchmark Levels

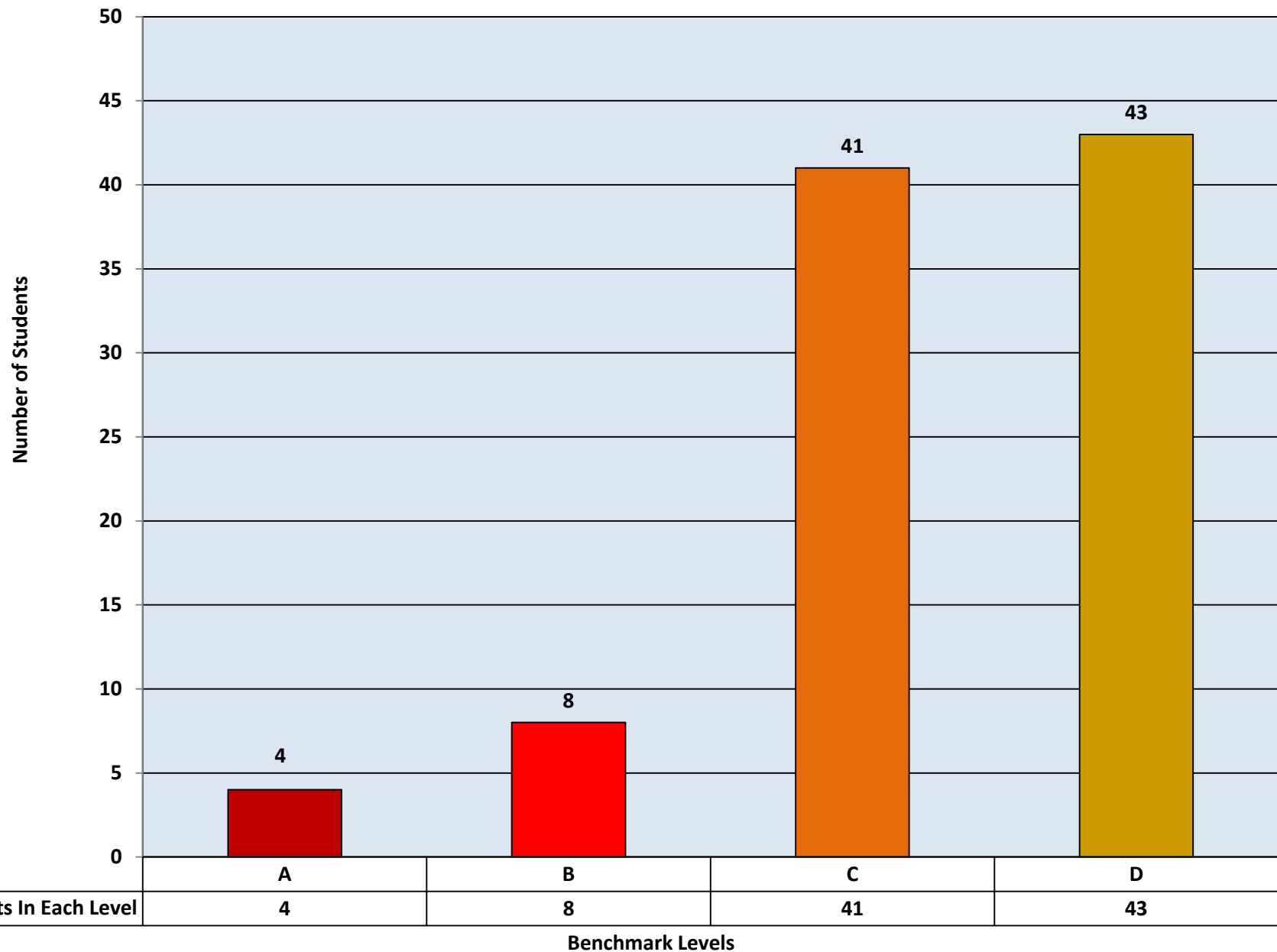
# 1st Grade Benchmark Levels A-R Ethnic Breakdown



- African American
- White
- Multi-Racial
- Unreported
- Hispanic
- Other
- Asian
- Jordan

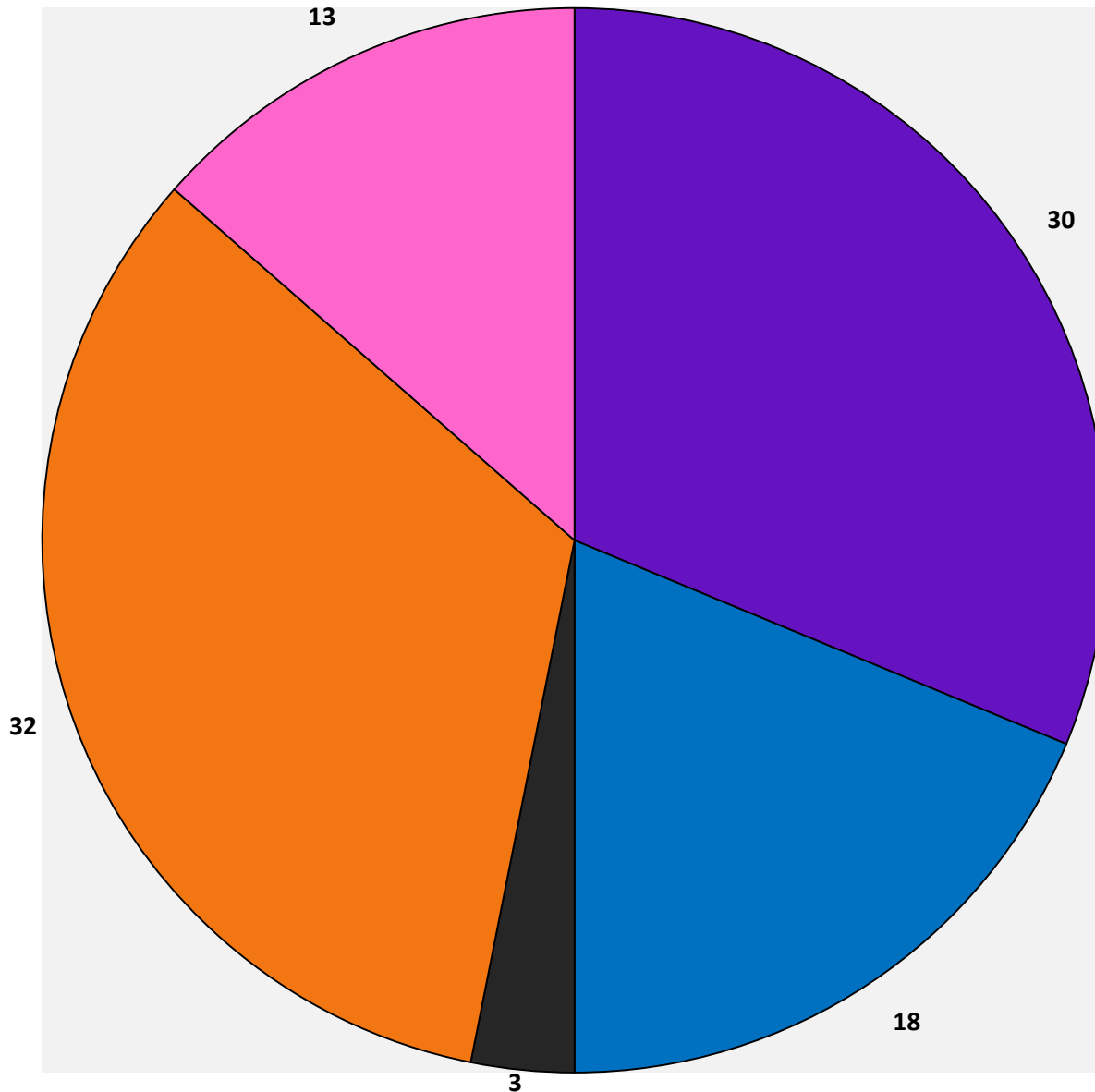
**\*\*The total Gender Split for  
Levels A-R was 120 Male  
Students to 102 Female Students**

**1st Grade Benchmark Levels A-D  
By the End of November**





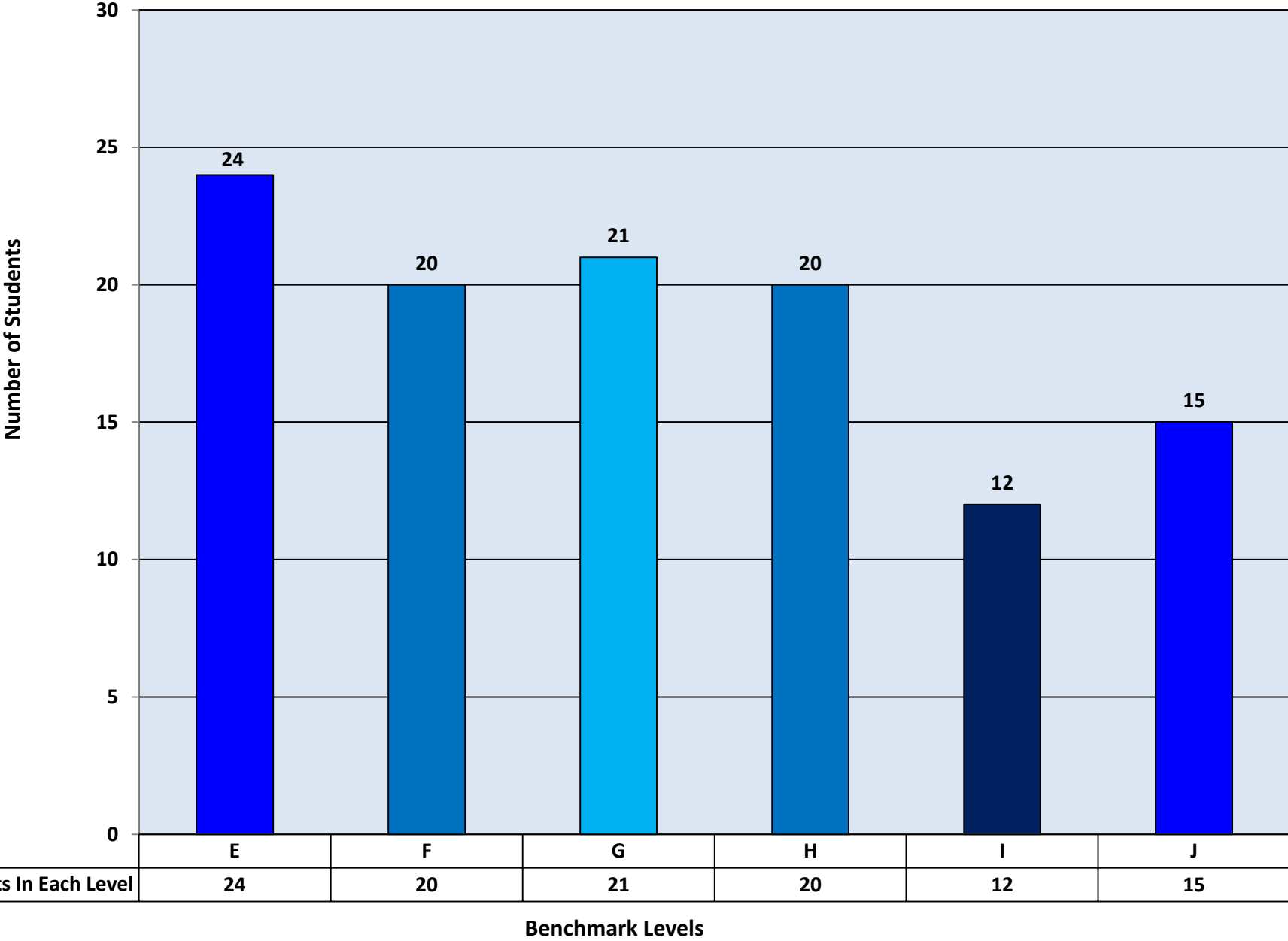
## 1st Grade Benchmark Levels A-D Ethnic Breakdown



- African American
- White
- Multi-Racial
- Unreported
- Hispanic

**\*\*In the A-D Levels the Total  
Gender Split was 56 Male  
Students to 40 Female  
Students**

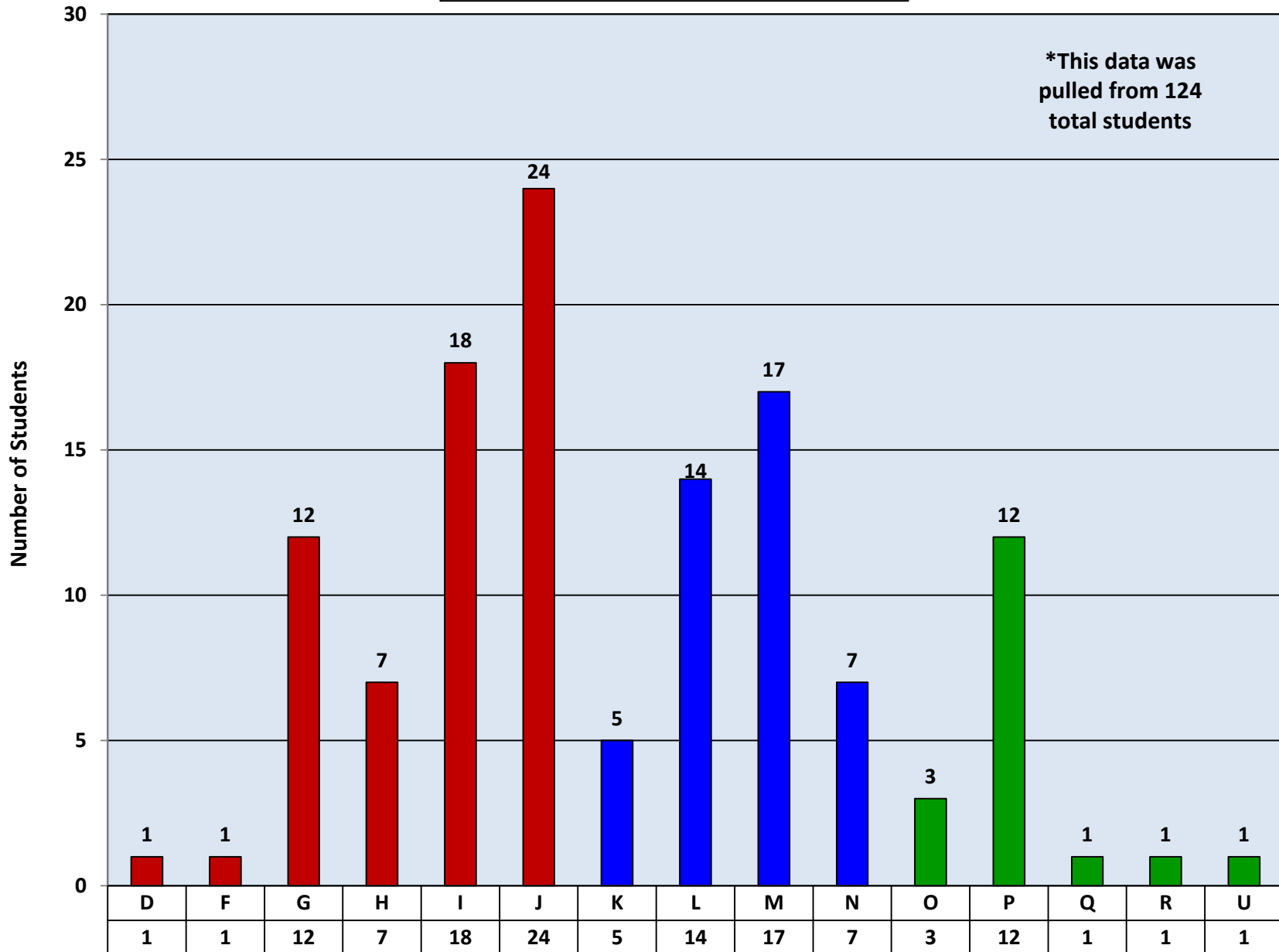
**1st Grade Benchmark Levels E-J  
By the End of November**



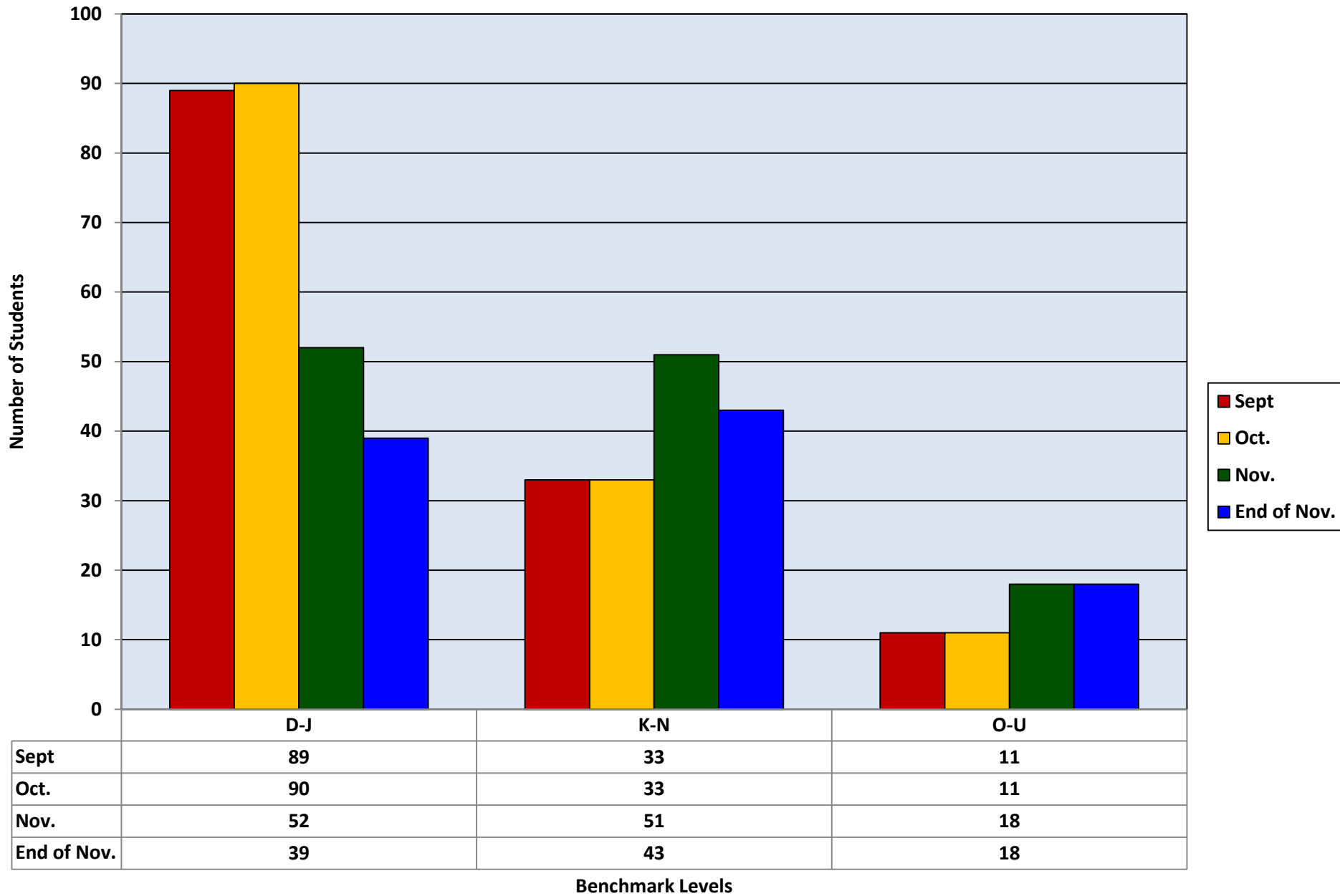
# **2<sup>nd</sup> Grade Benchmark Data**

## 2nd Grade Benchmark Levels D-U From the End of November

\*This data was  
pulled from 124  
total students

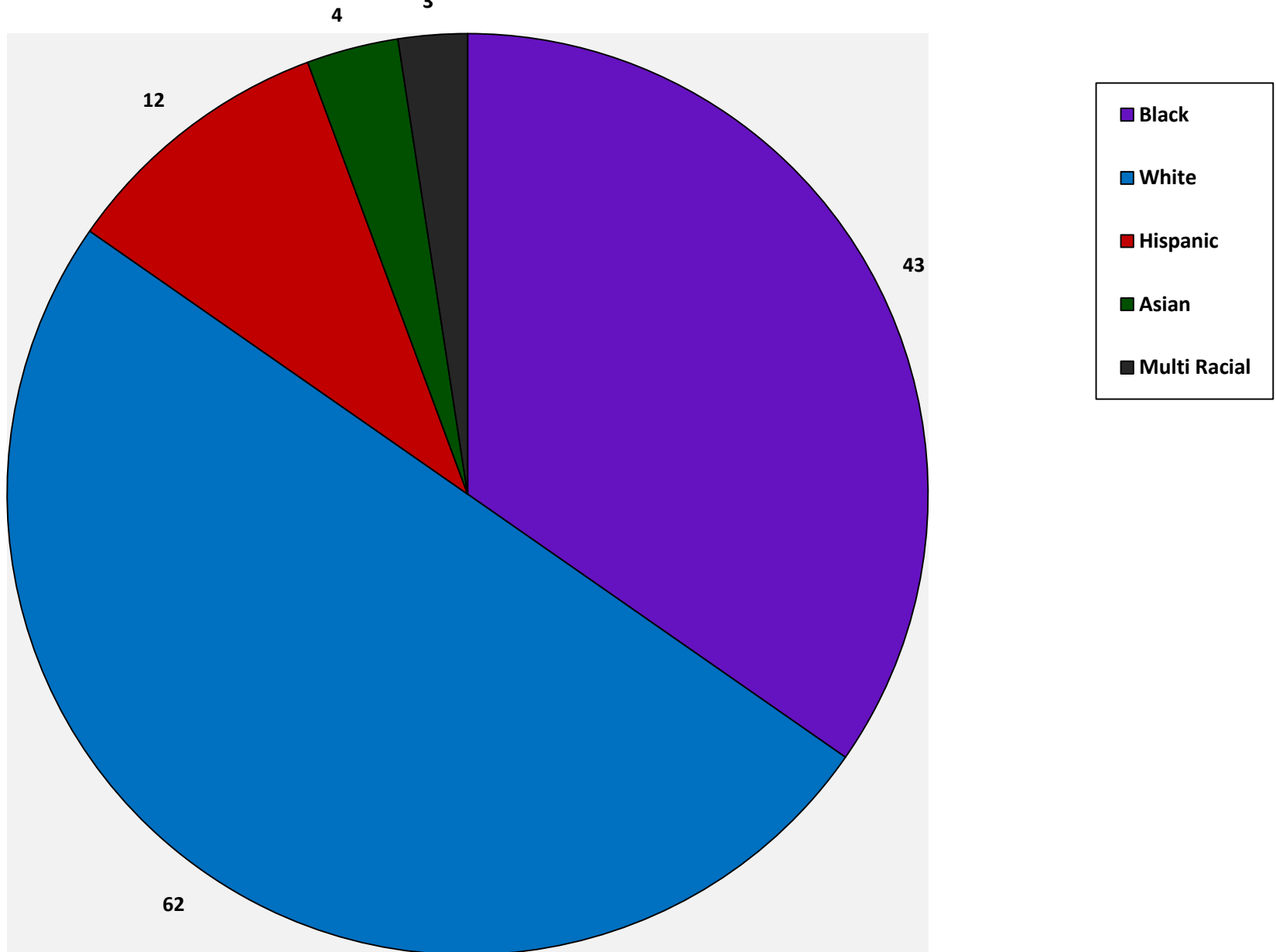


## 2<sup>nd</sup> Grade Benchmark Comparison September-End of November

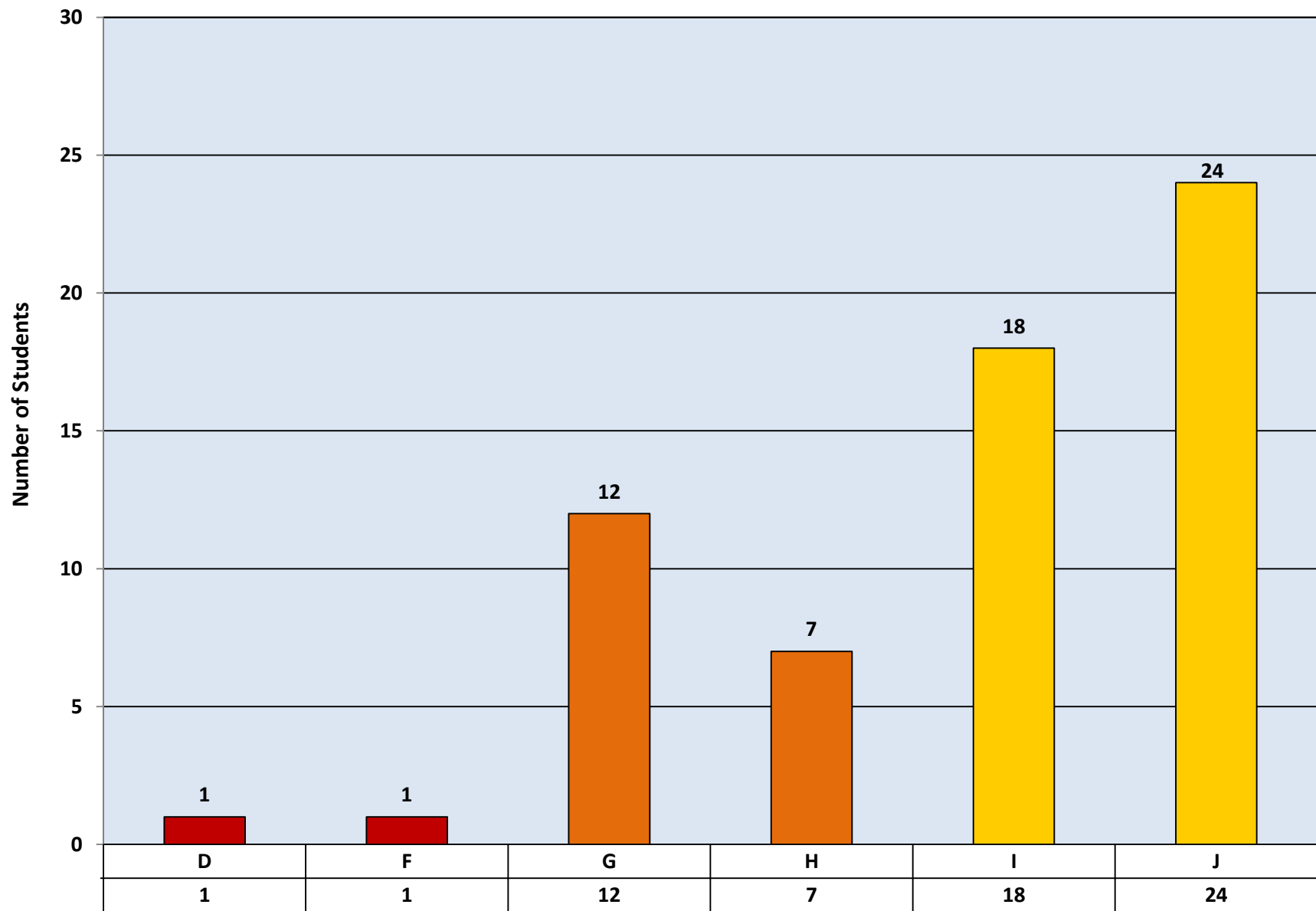


## 2nd Grade Benchmark Levels D-U

### Ethnic Breakdown

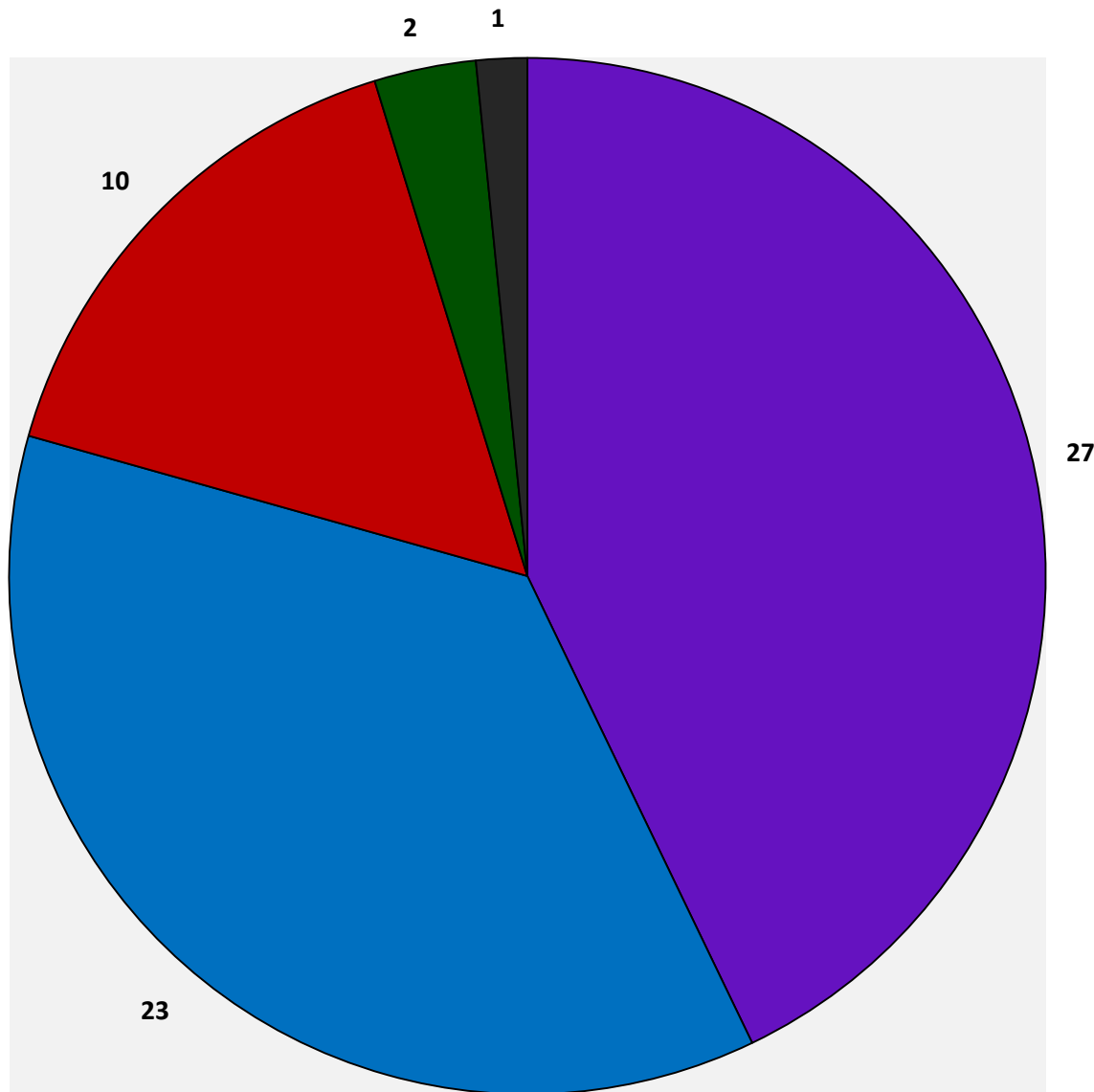


**2nd Grade Benchmark Levels D-J  
From the End of November**



**Benchmark Levels**

## 2nd Grade Benchmark Levels D-J Ethnic Breakdown

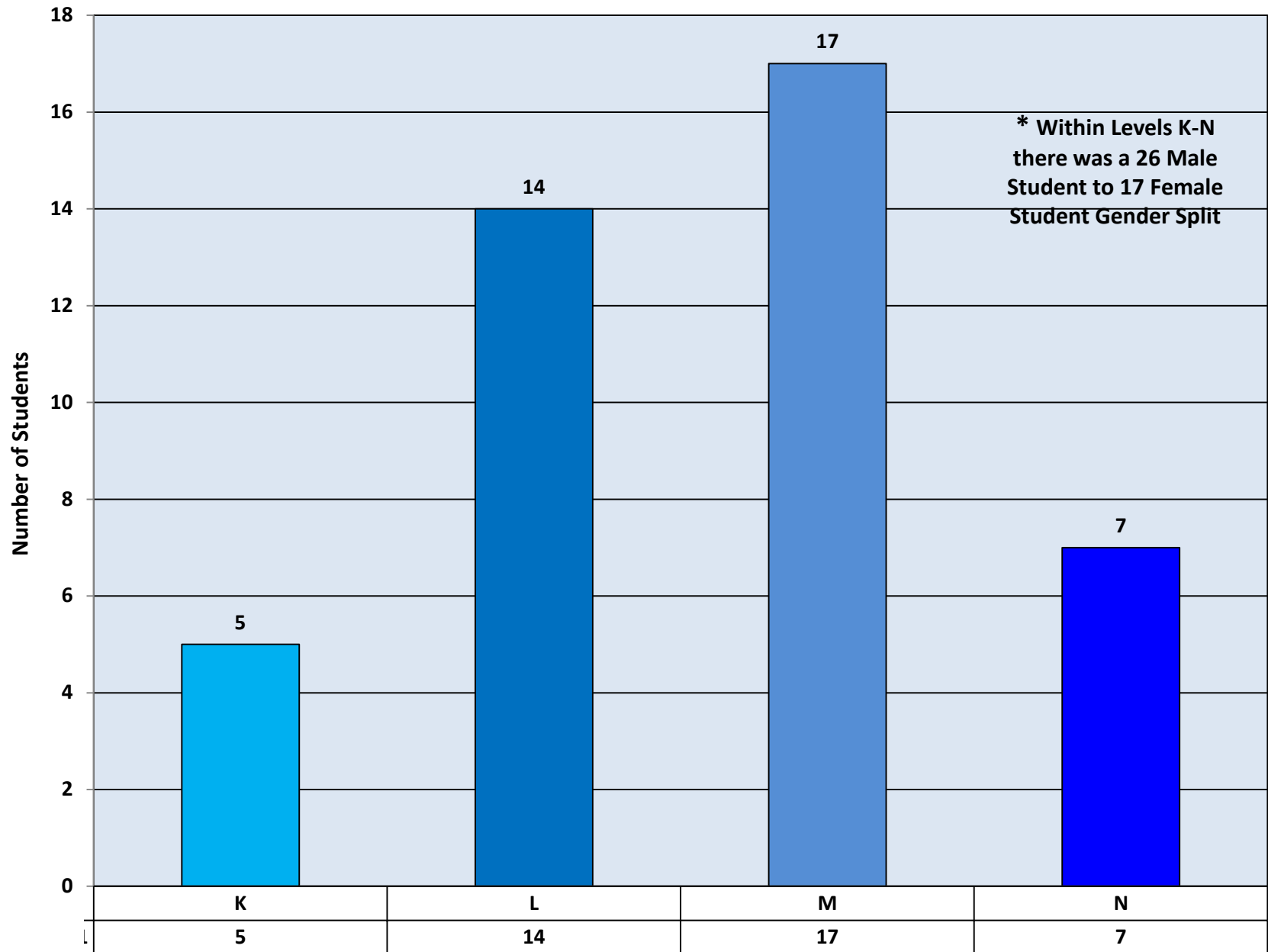


■ Black  
■ White  
■ Hispanic  
■ Asian  
■ Multi-Racial

**\*\*The Gender Split was 38  
Male Students to 25 Female  
Students**



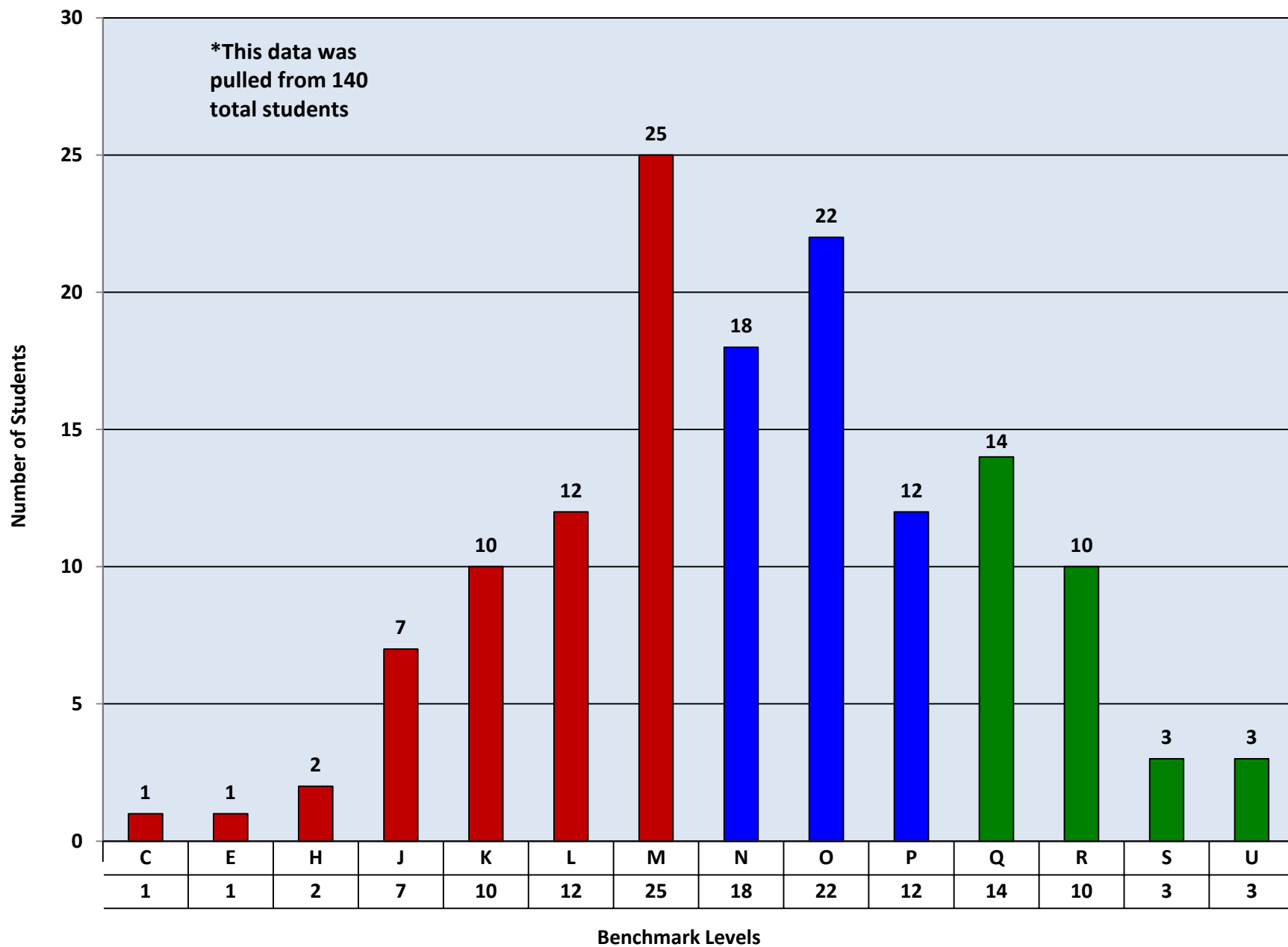
**2nd Grade Benchmark Levels K-N  
From the End of November**



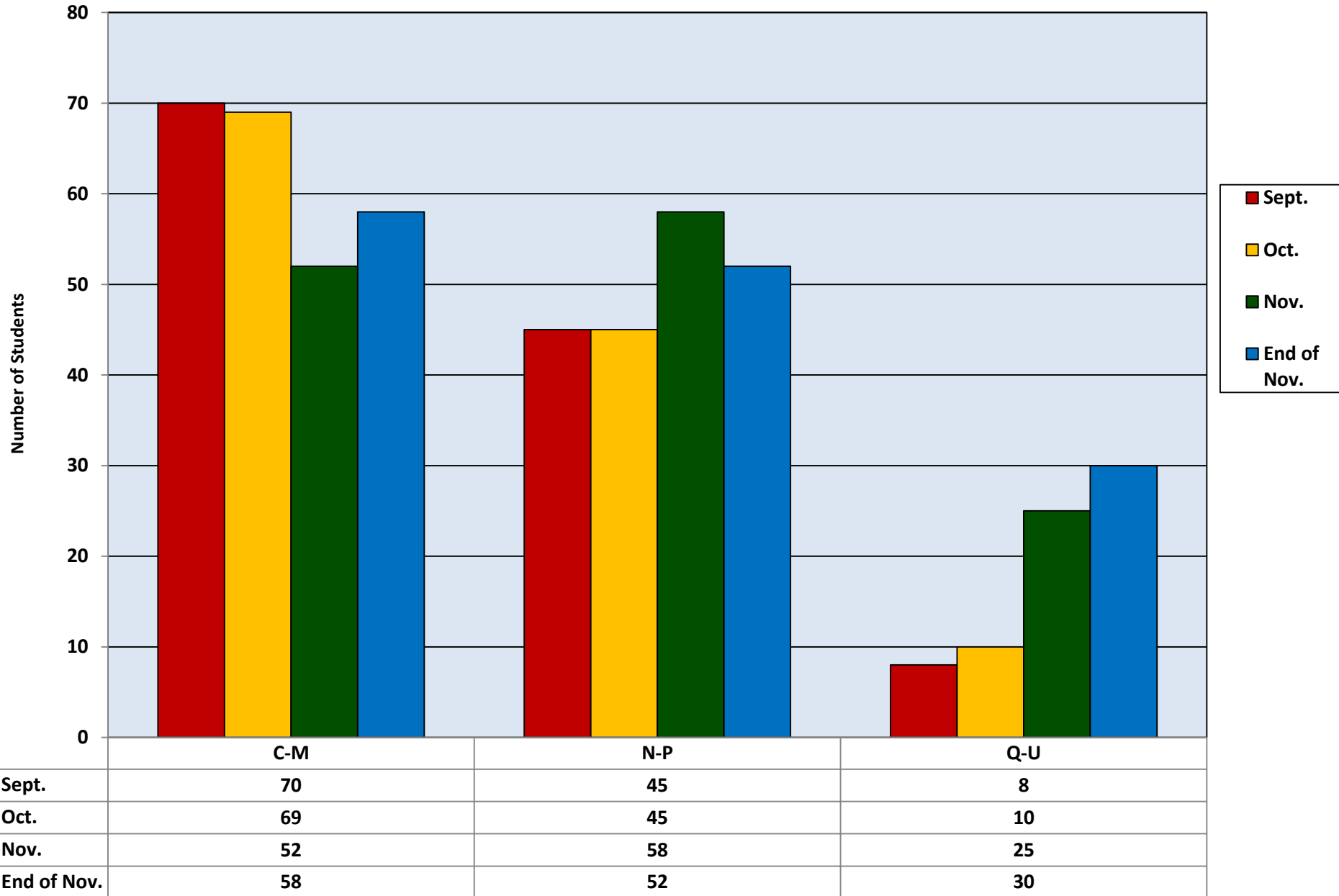
Benchmark Levels

# **3<sup>rd</sup> Grade Benchmark Data**

**3rd Grade Benchmark Levels C-U**  
**From the End of November**

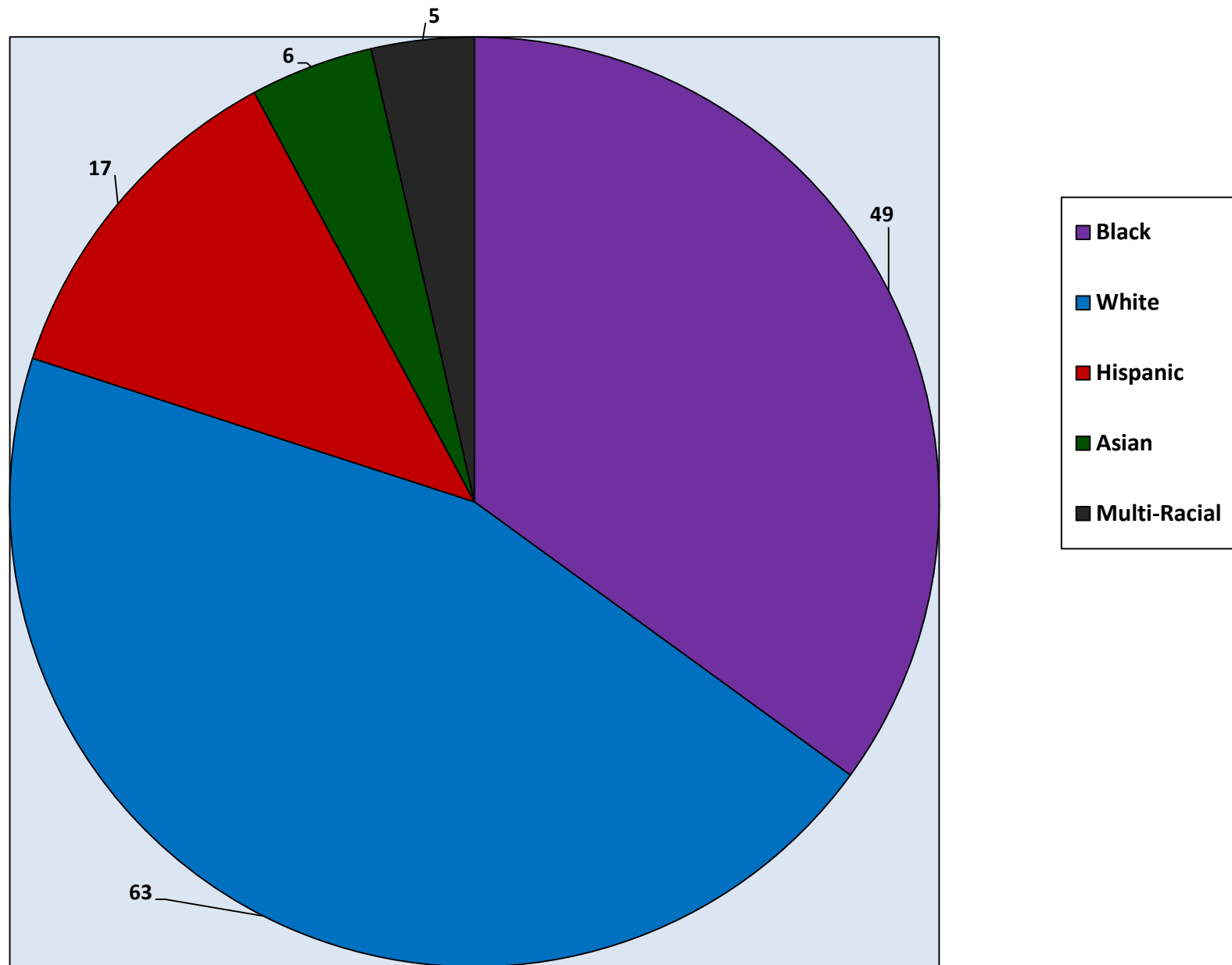


# 3<sup>rd</sup> Grade Benchmark Comparison September-End of November

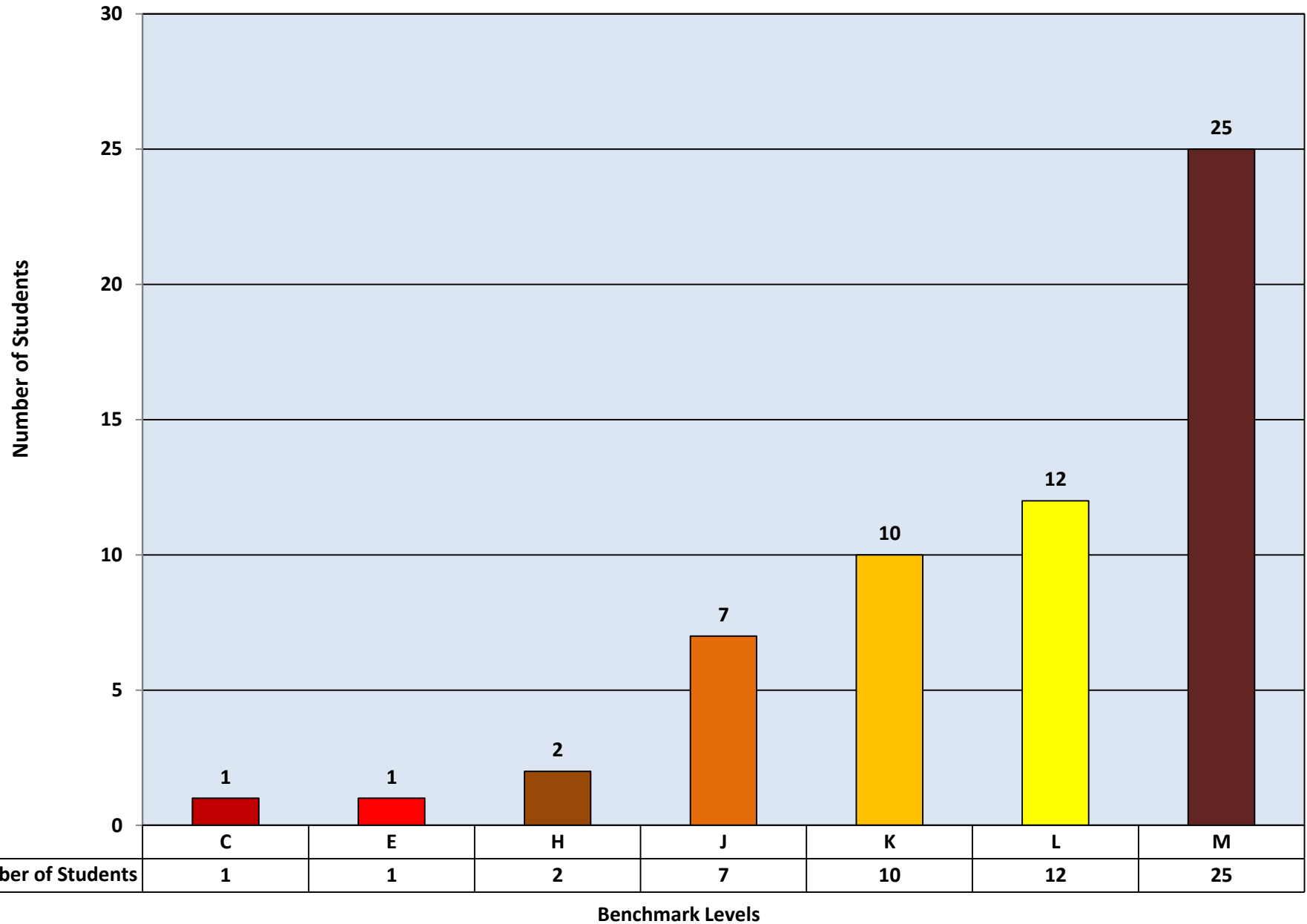


Benchmark Levels

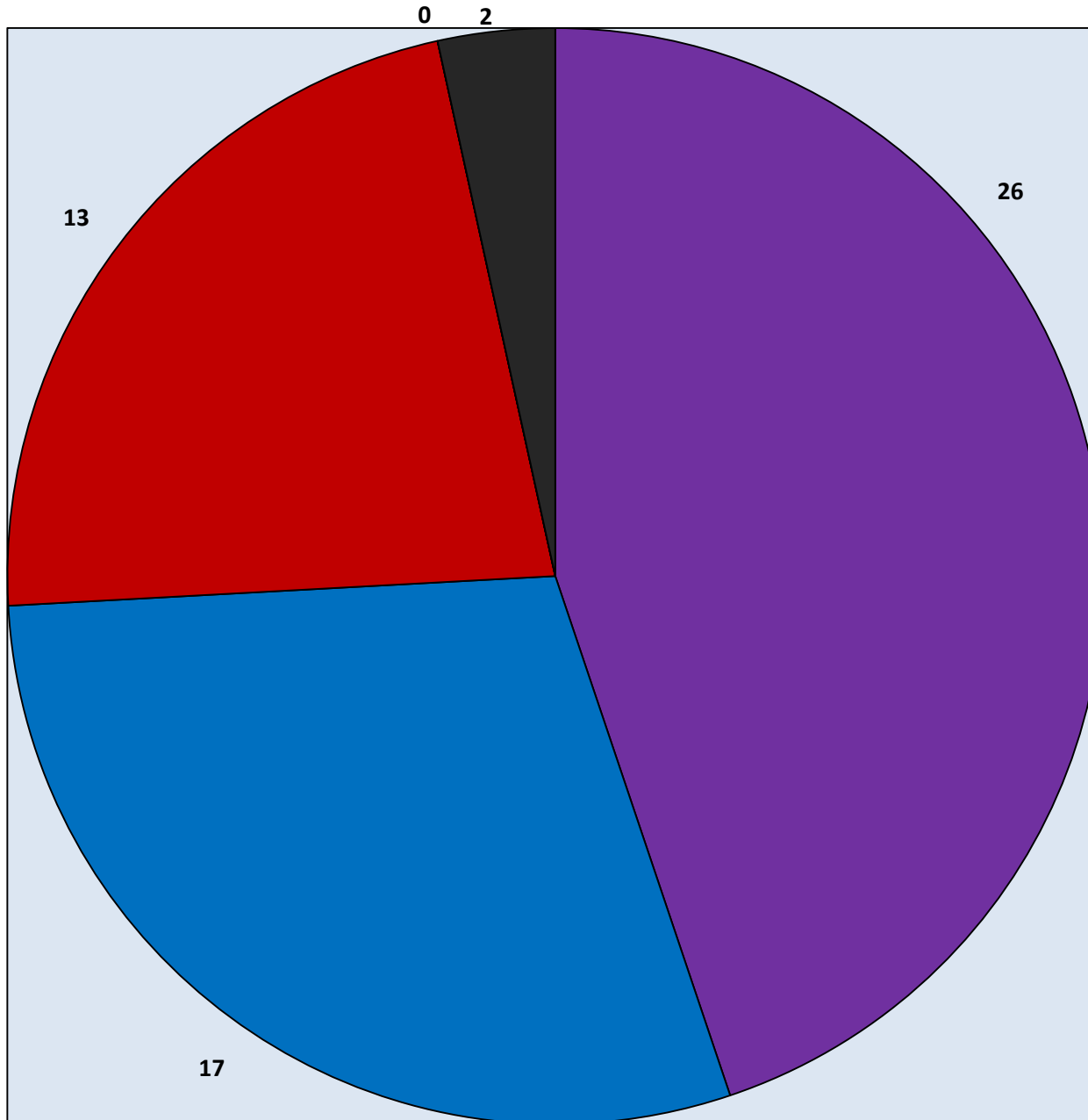
**3rd Grade Benchmark Levels C-U  
Ethnic Breakdown**



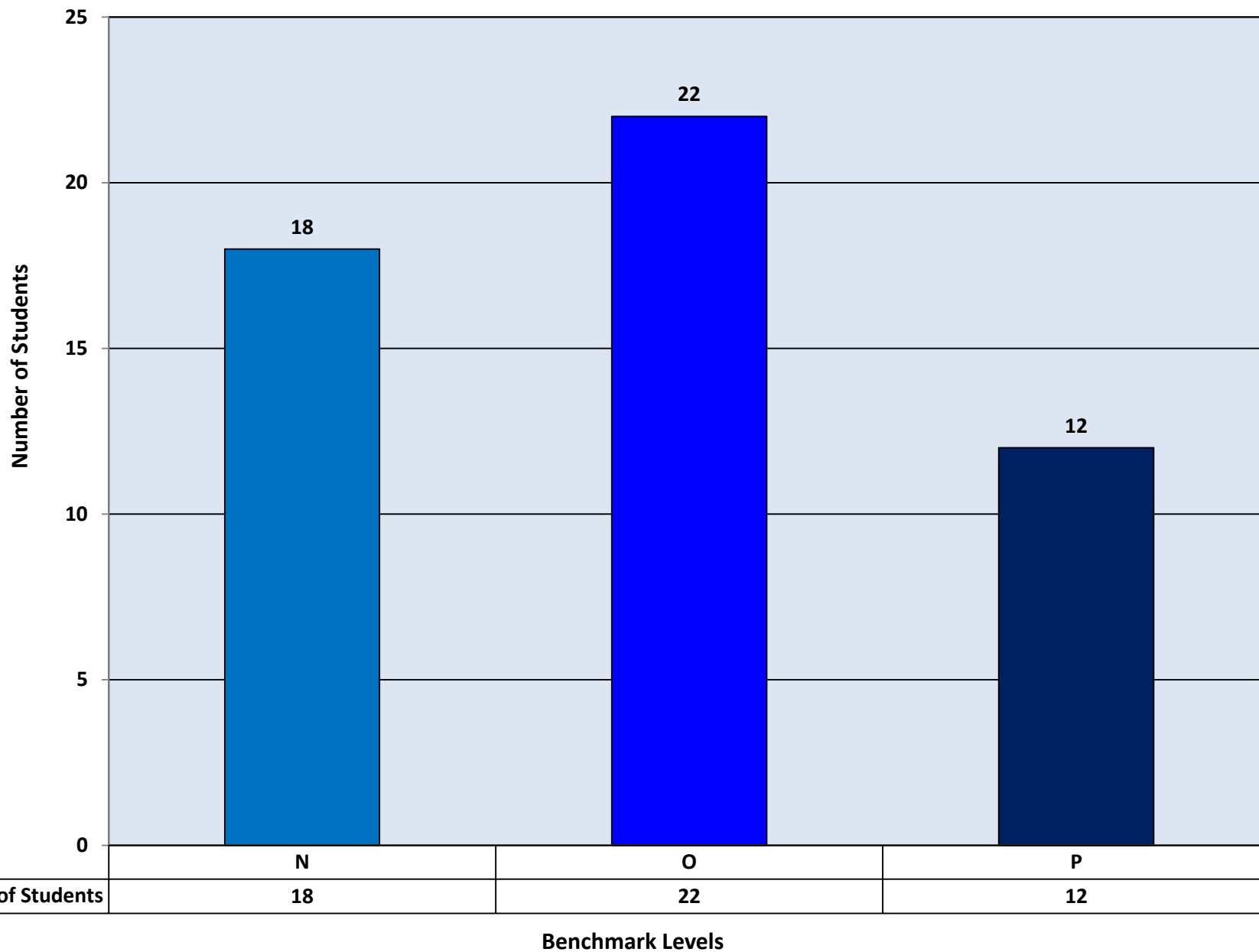
**3rd Grade Benchmark Levels C-M  
From the End of Novmeber**



### 3rd Grade Benchmark Levels C-M Ethnic Breakdown



**3rd Grade Benchmark Levels N-P  
From the End of November**





# **4<sup>th</sup> Grade Benchmark Data**

# 4th Grade Benchmark Levels D-Z From the End of November

\*This data was  
pulled from 162  
total students

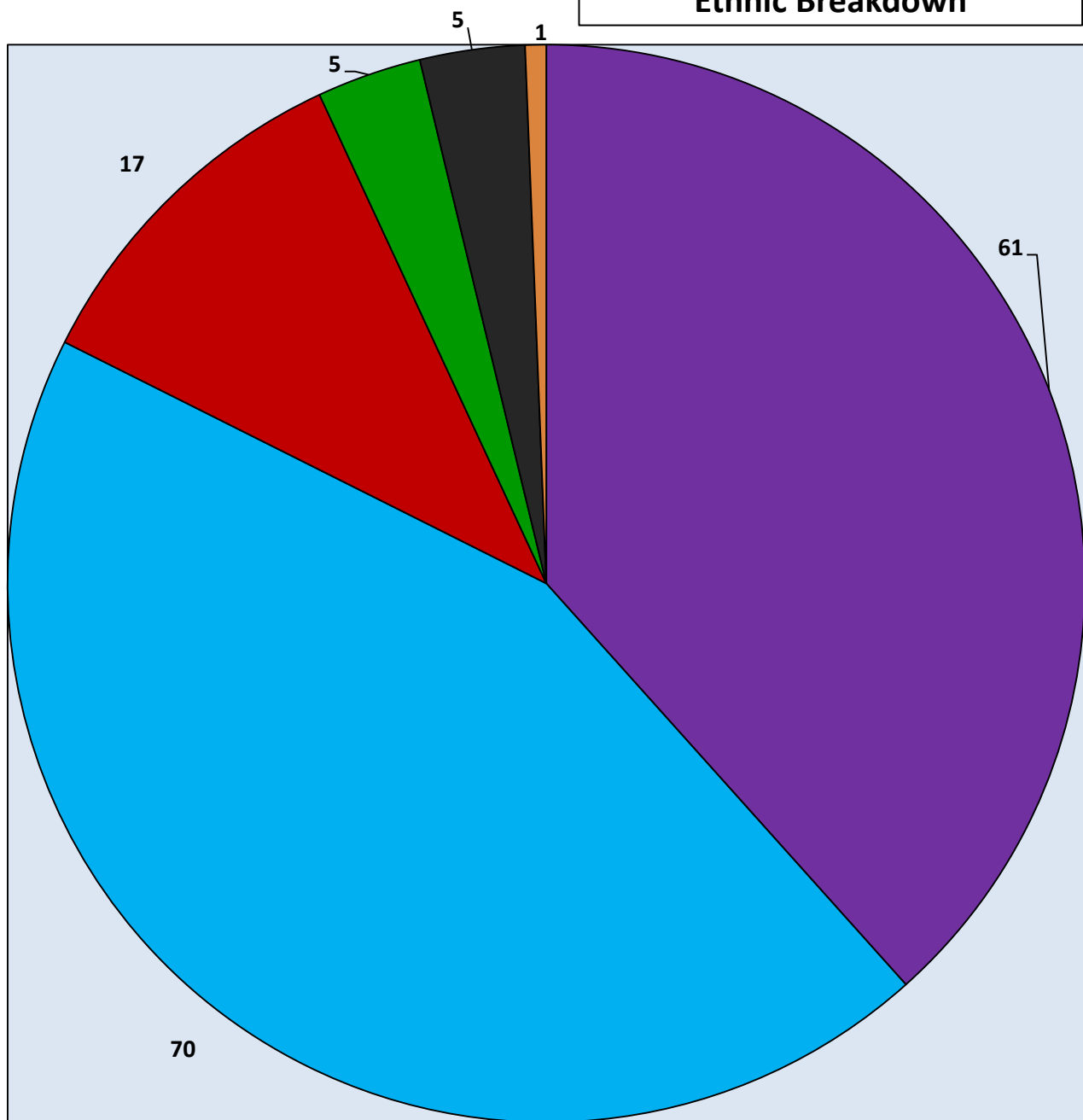
Number of Students

# of Students

Benchmark Levels	D	G	H	J	L	M	N	O	P	Q	R	S	T	U	V	W	X	Y	Z
# of Students	1	2	2	3	9	5	5	14	20	20	11	10	24	17	2	6	6	2	3

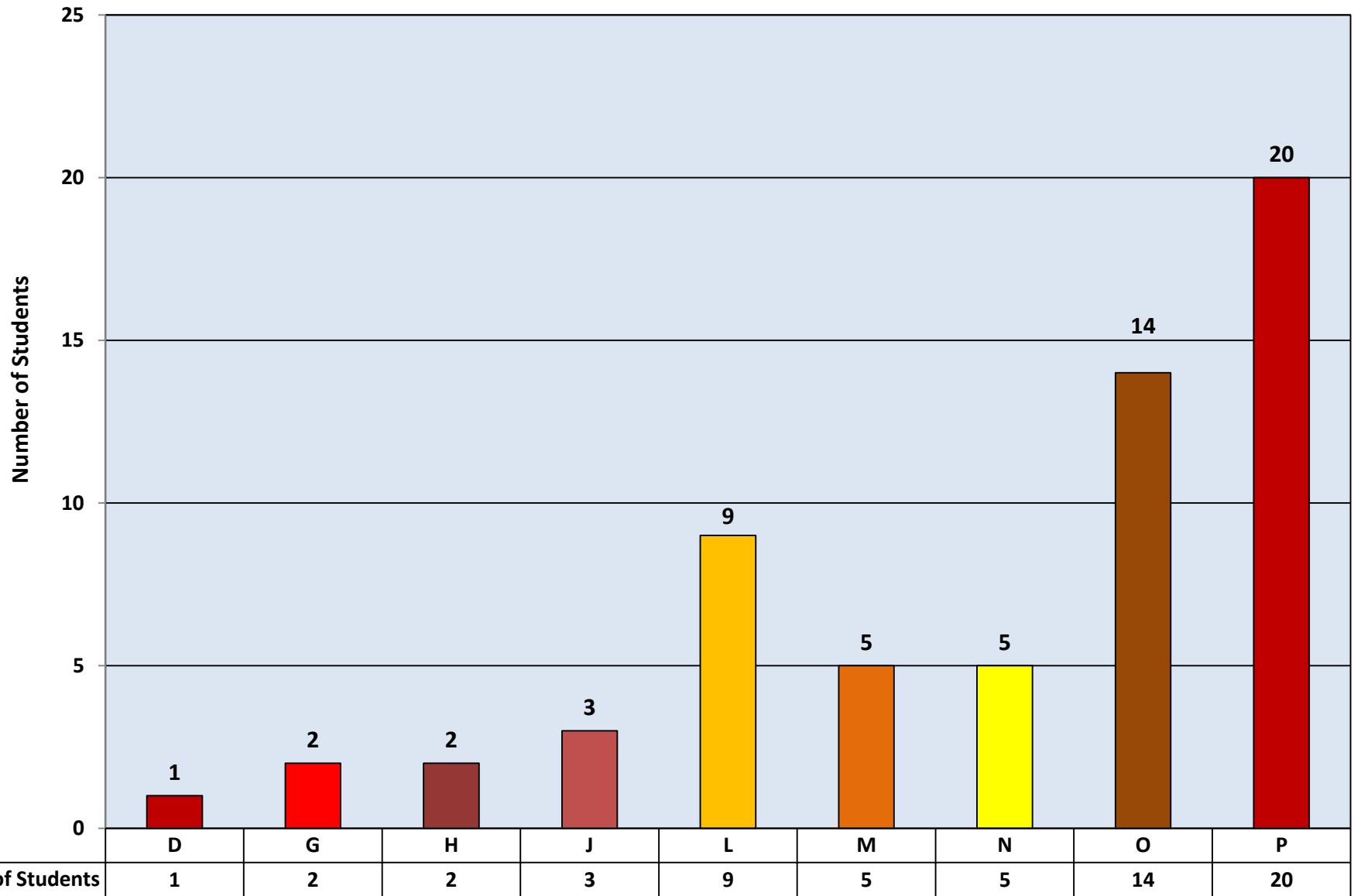
Benchmark Levels

4th Grade Benchmark Levels D-Z  
Ethnic Breakdown



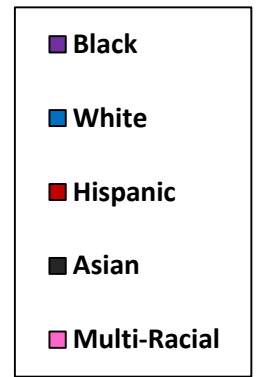
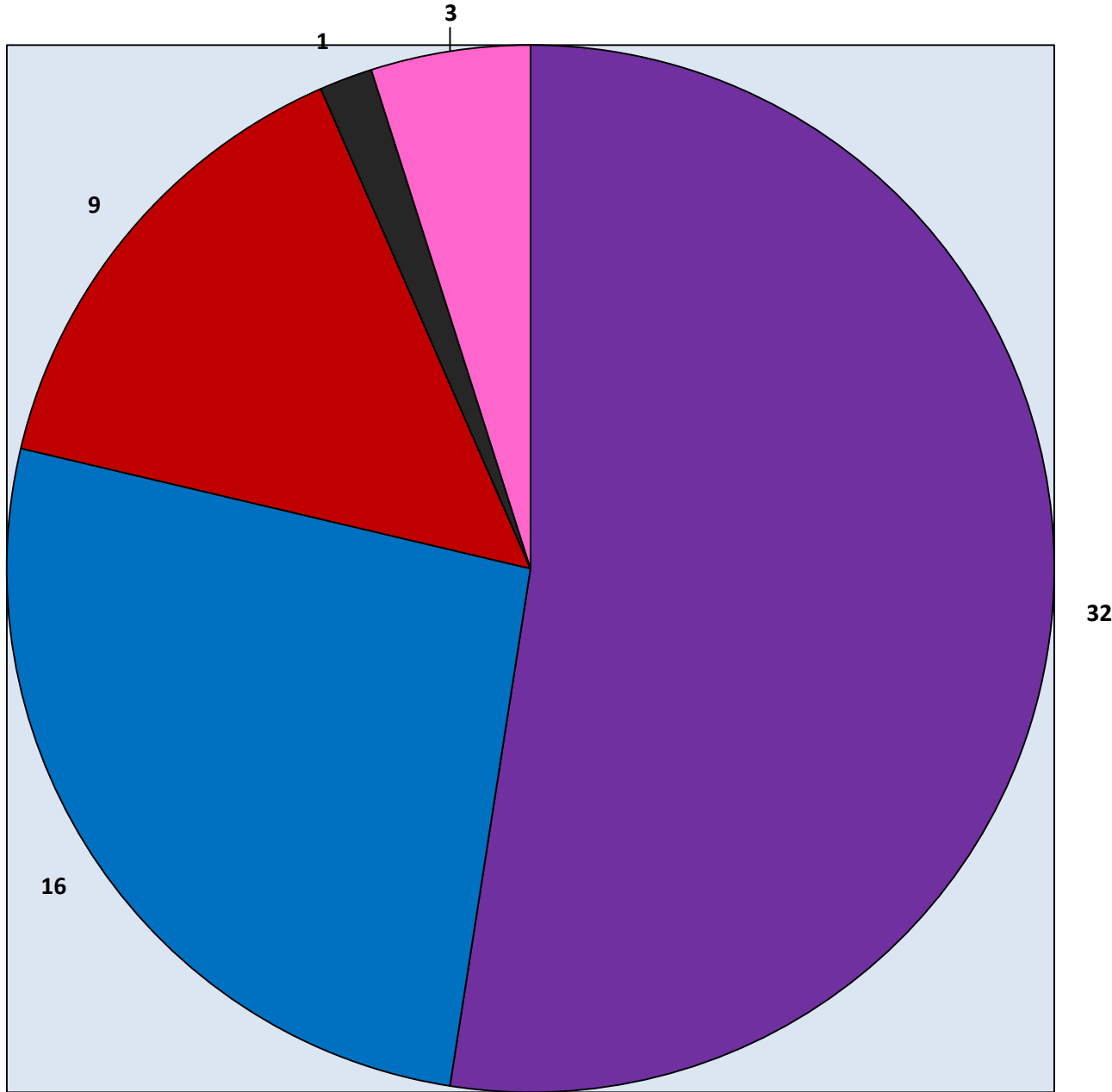
- Black
- White
- Hispanic
- Asian
- Multi-Racial
- Other

# **4th Grade Benchmark Levels D-P From the End of November**

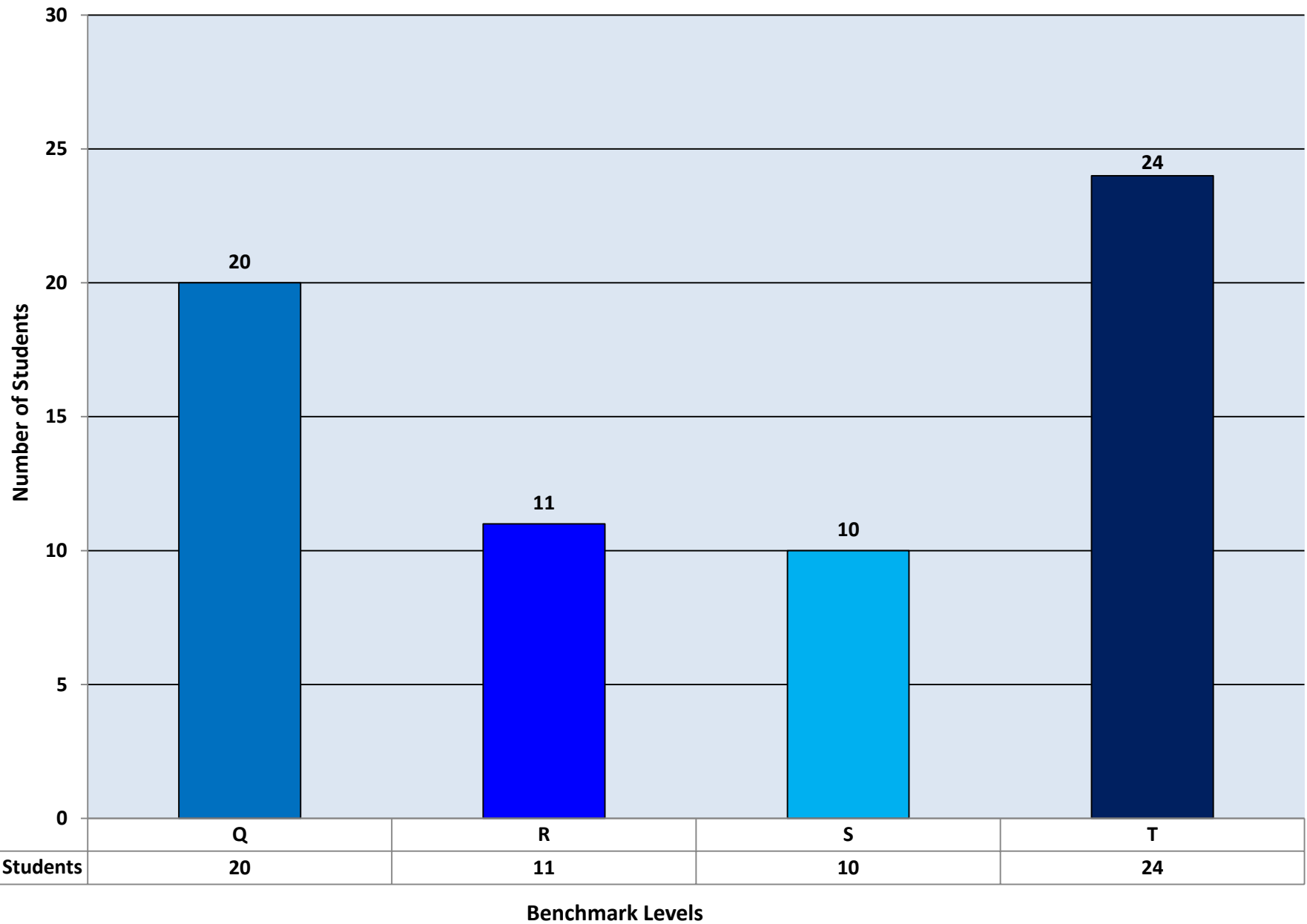


**Benchmark Levels**

# 4th Grade Benchmark Levels D-P Ethnic Breakdown

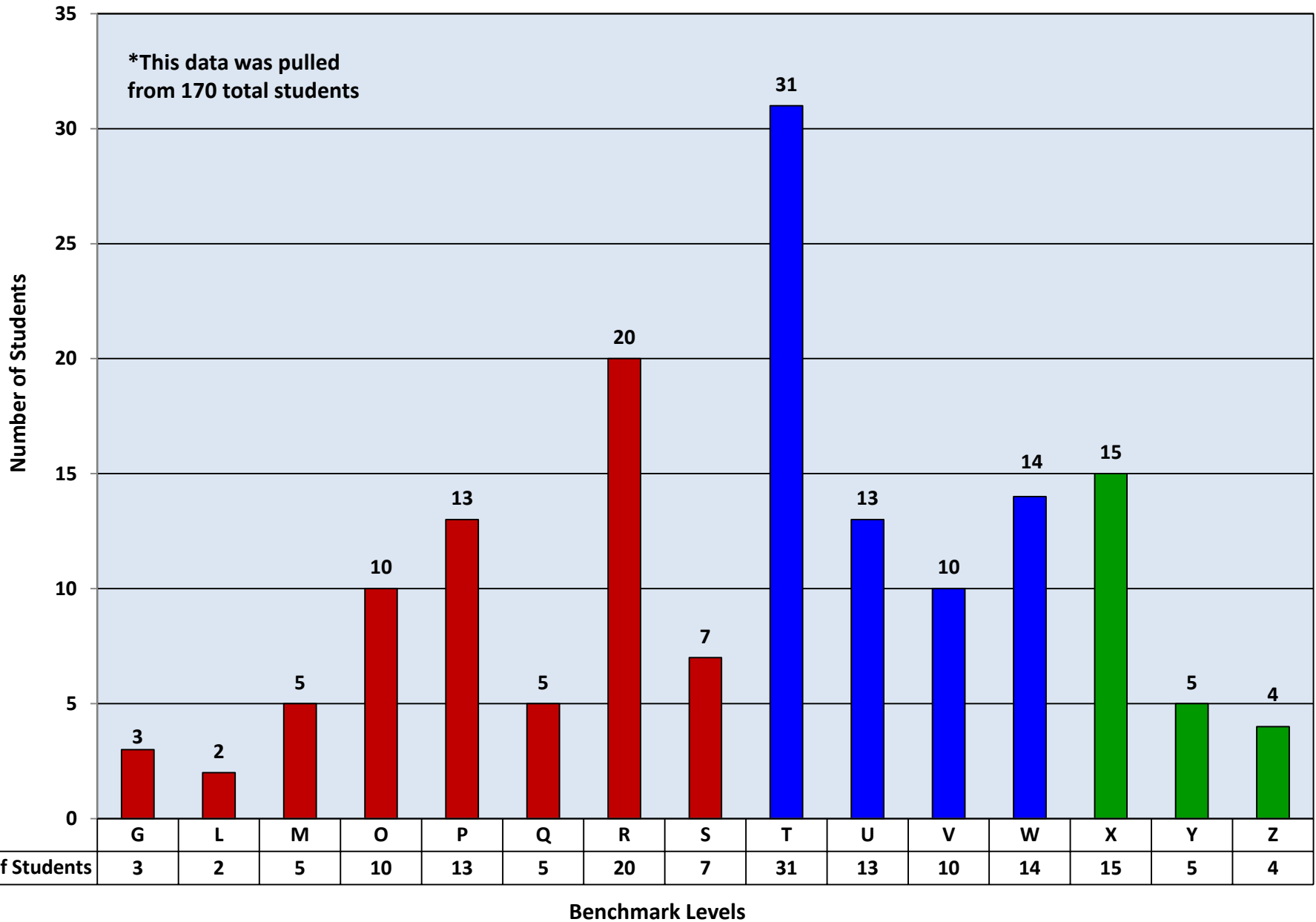


**4th Grade Benchmark Levels Q-T  
From the End of November**



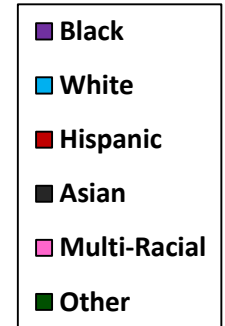
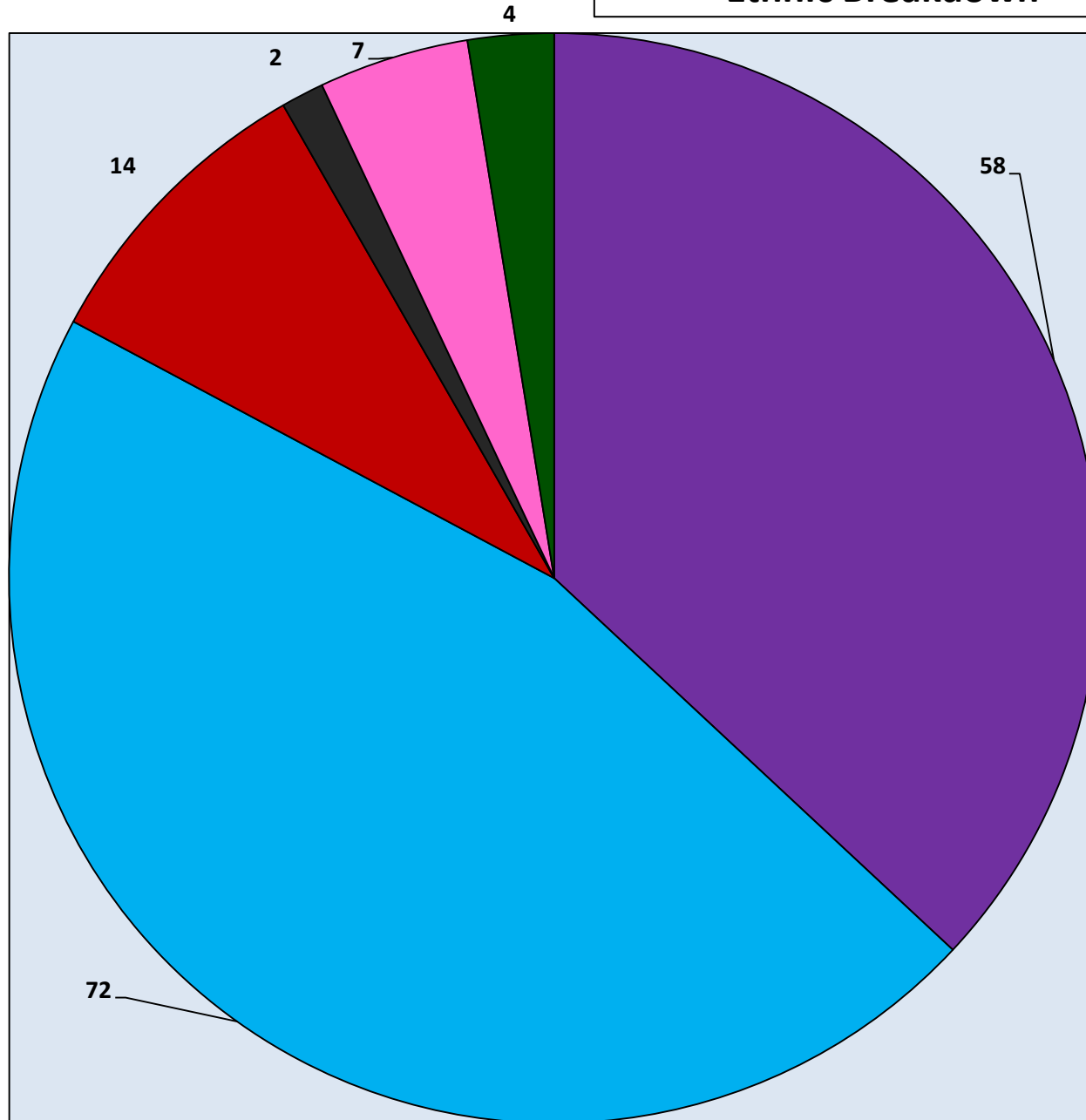
# **5<sup>th</sup> Grade Benchmark Data**

# 5th Grade Benchmark Levels G-Z From the End of November

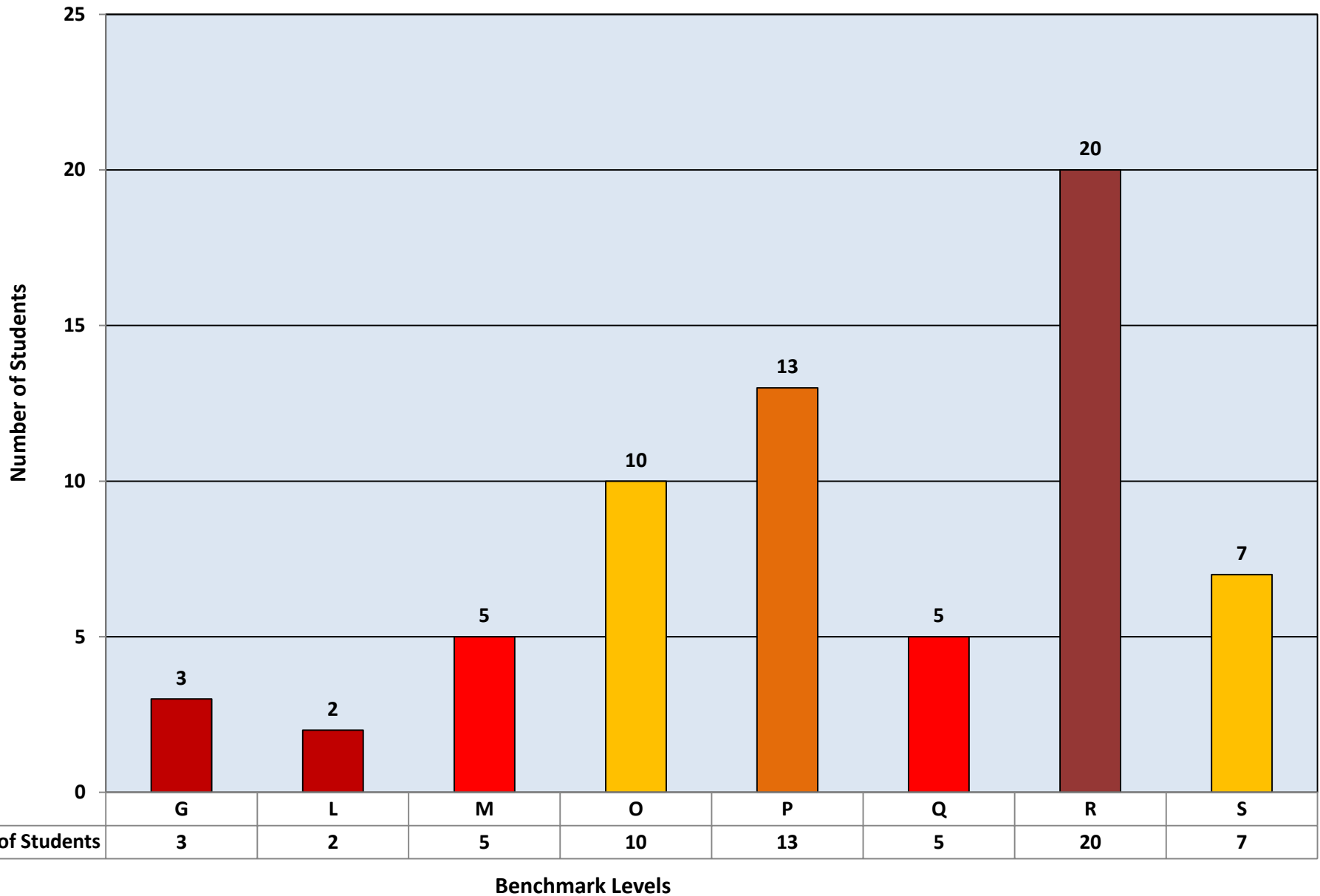




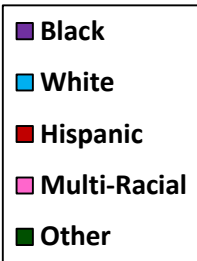
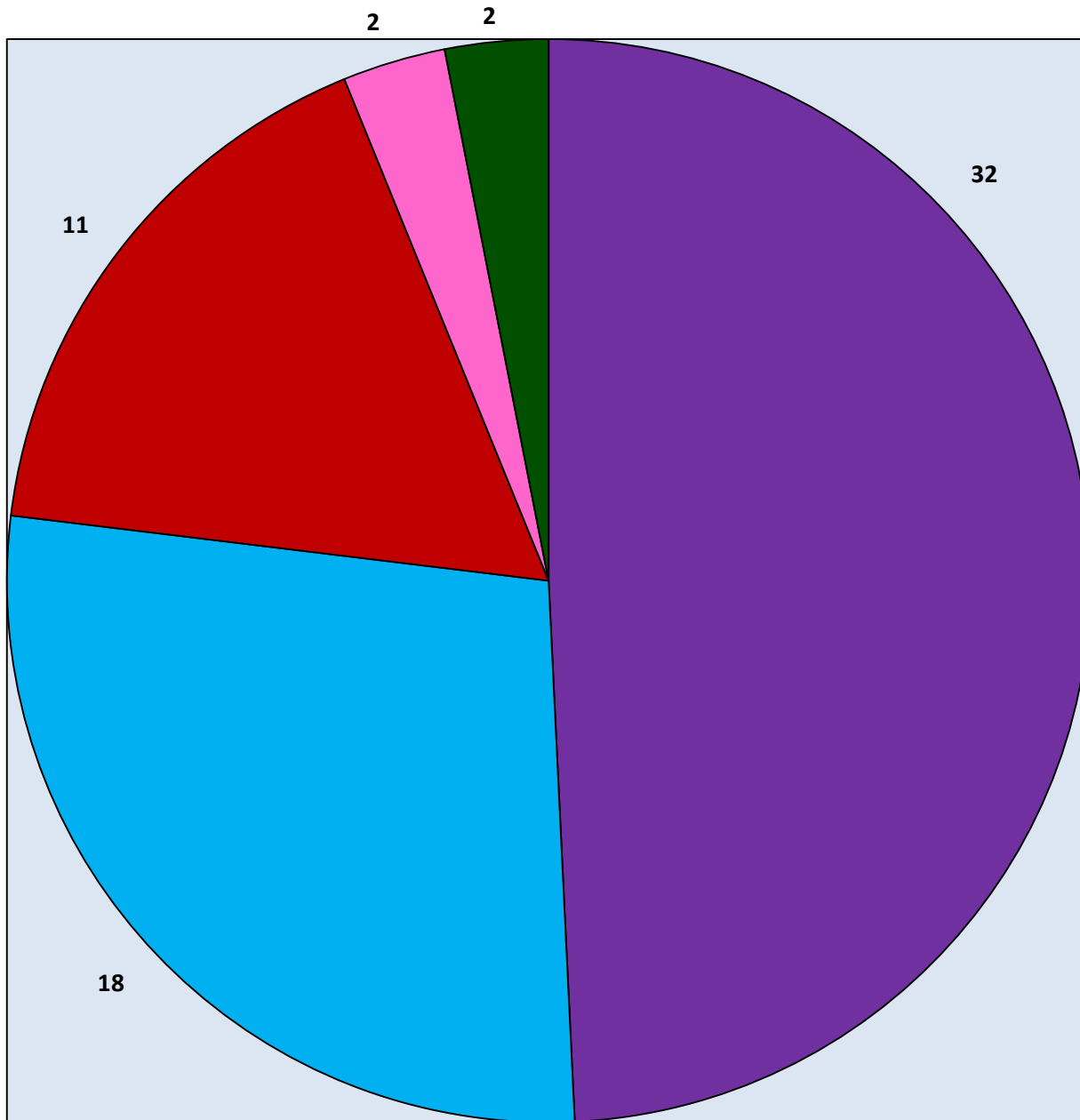
# 5th Grade Benchmark Levels G-Z Ethnic Breakdown



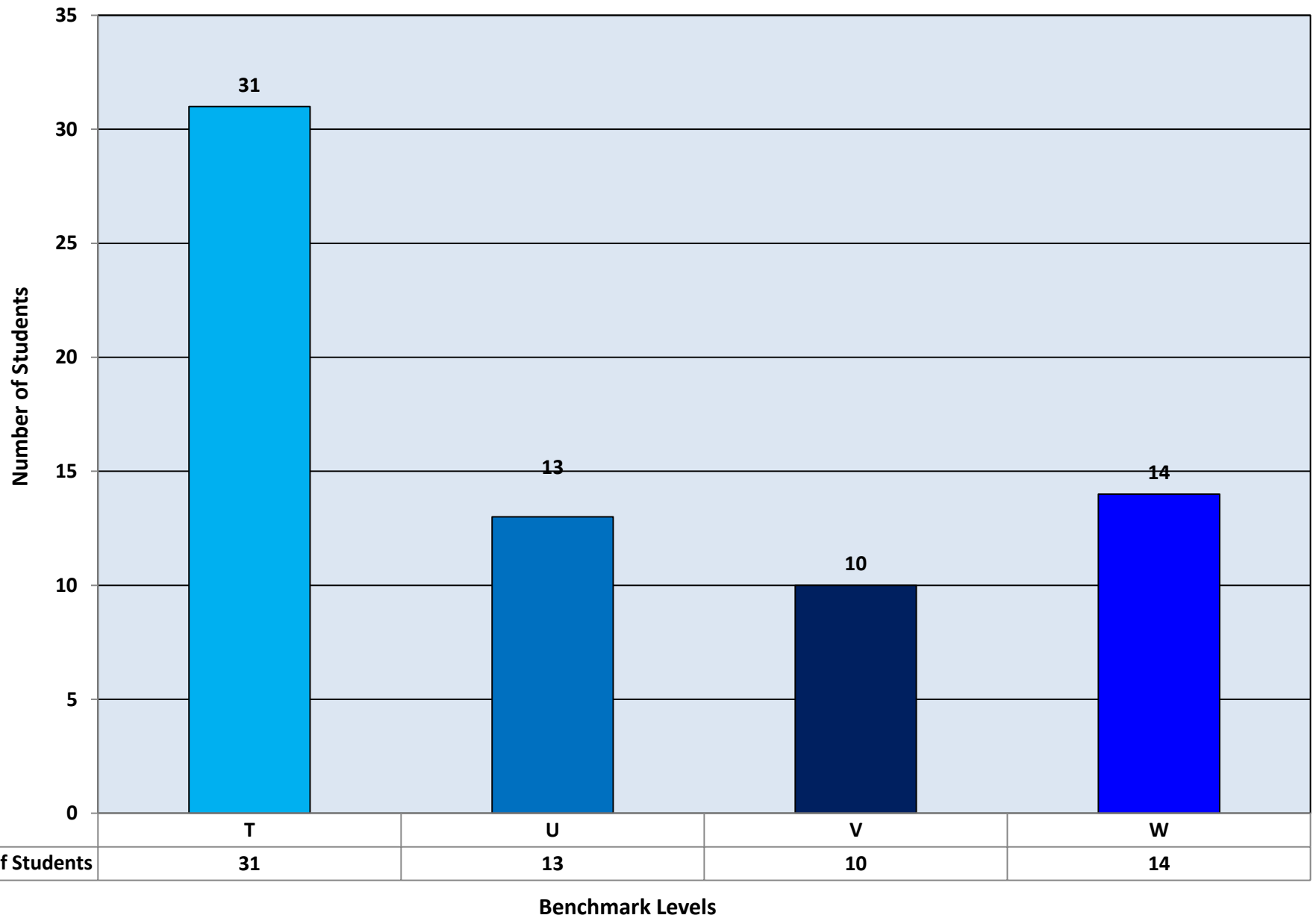
# 5th Grade Benchmark Levels G-S From the End of November



# 5th Grade Benchmark Levels G-S Ethnic Breakdown



**5th Grade Benchmark Levels T-W  
From the End of November**

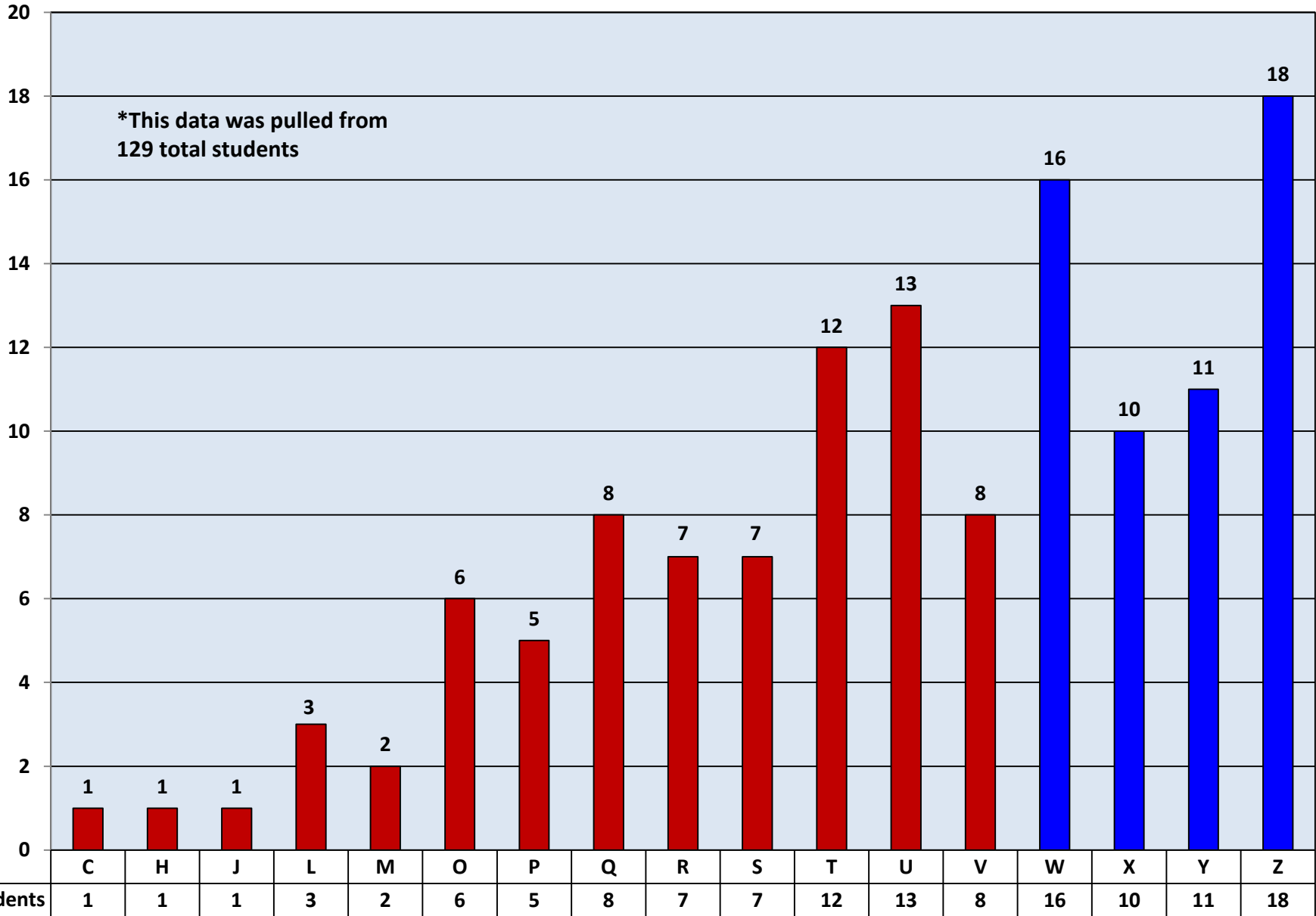


# **6<sup>th</sup> Grade Benchmark Data**

# 6th Grade Benchmark Levels C-Z From the End of November

\*This data was pulled from  
129 total students

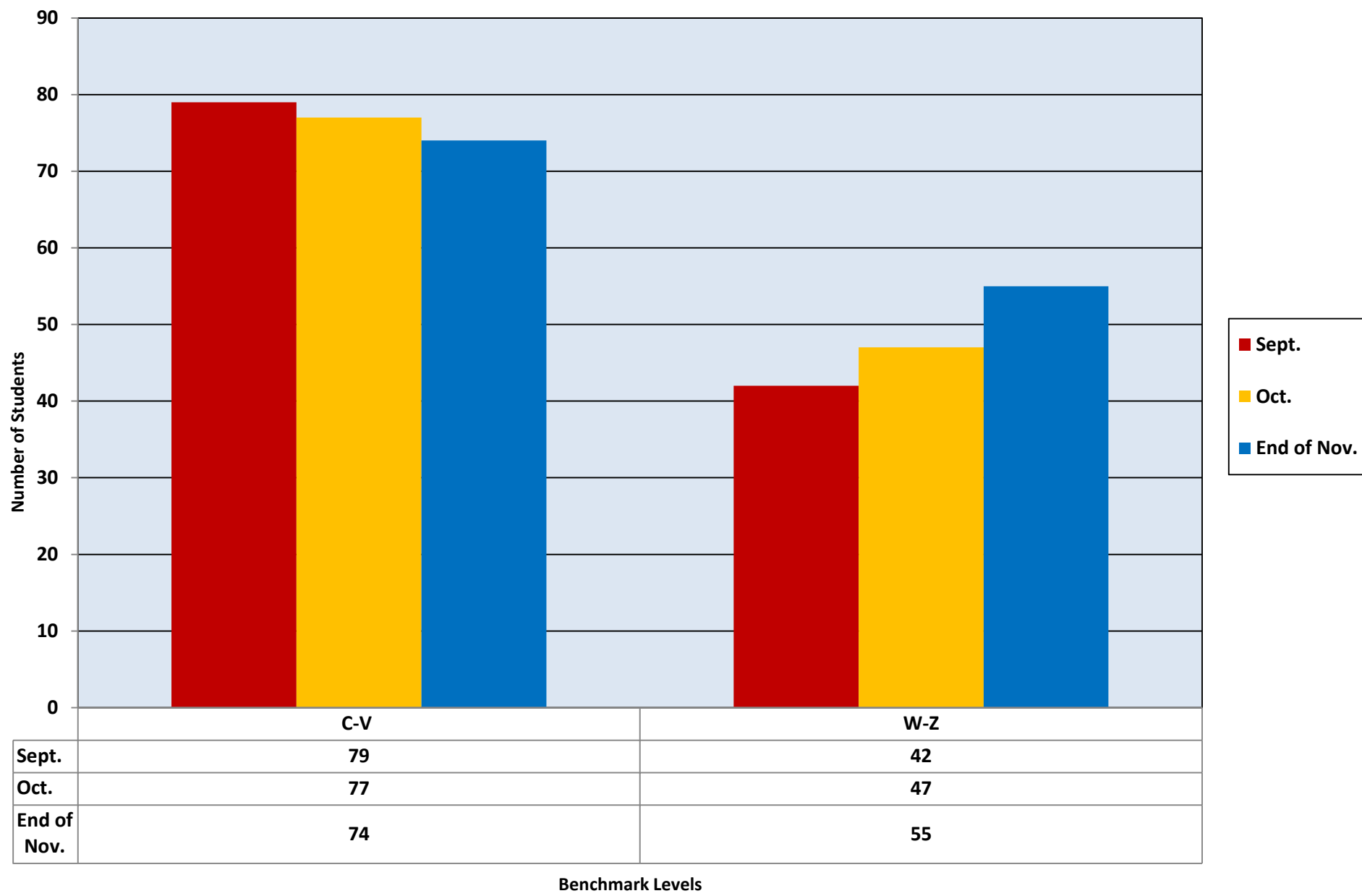
Number of Students



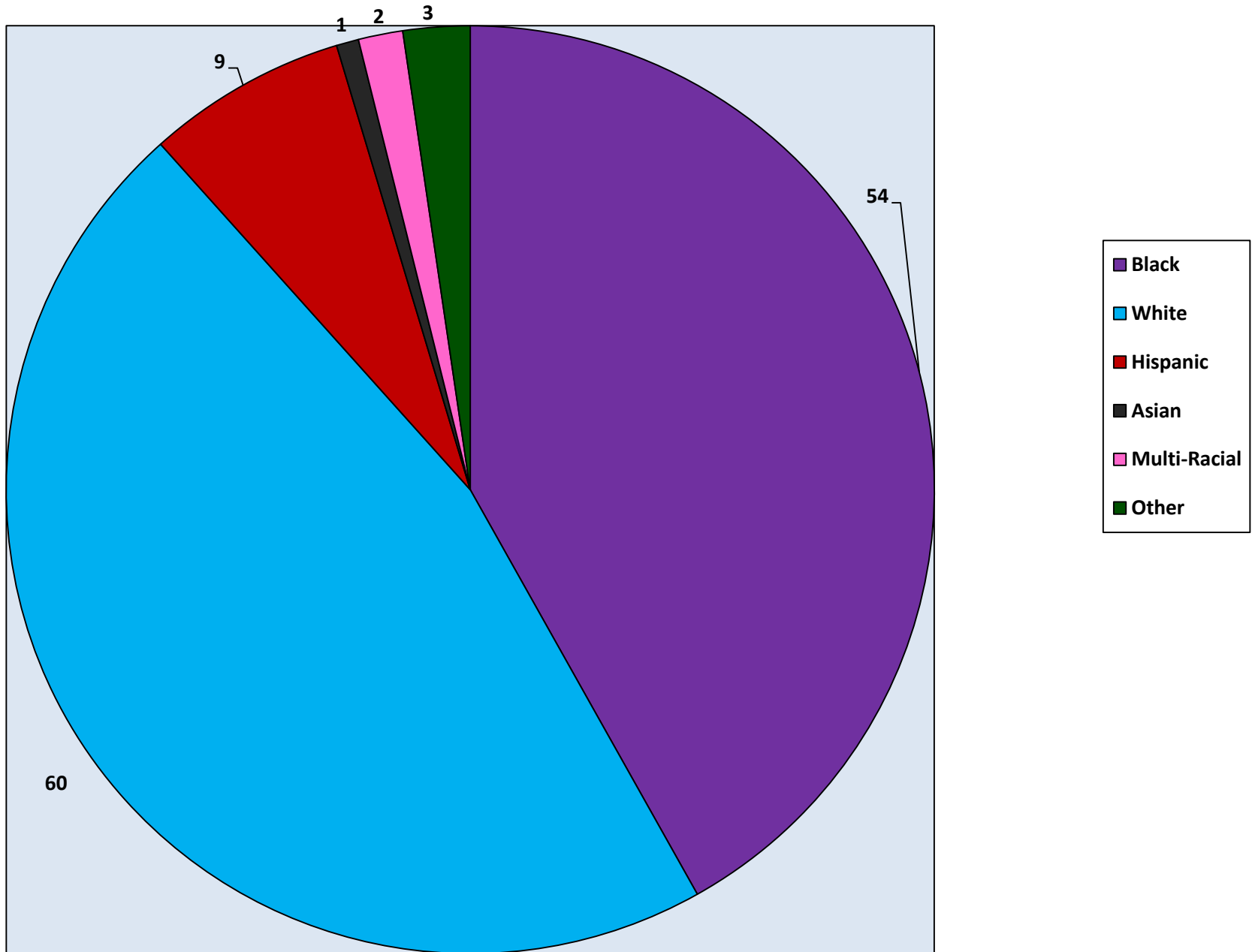
# of Students

Benchmark Levels

# 6th Grade Benchmark Comparison September-End of November

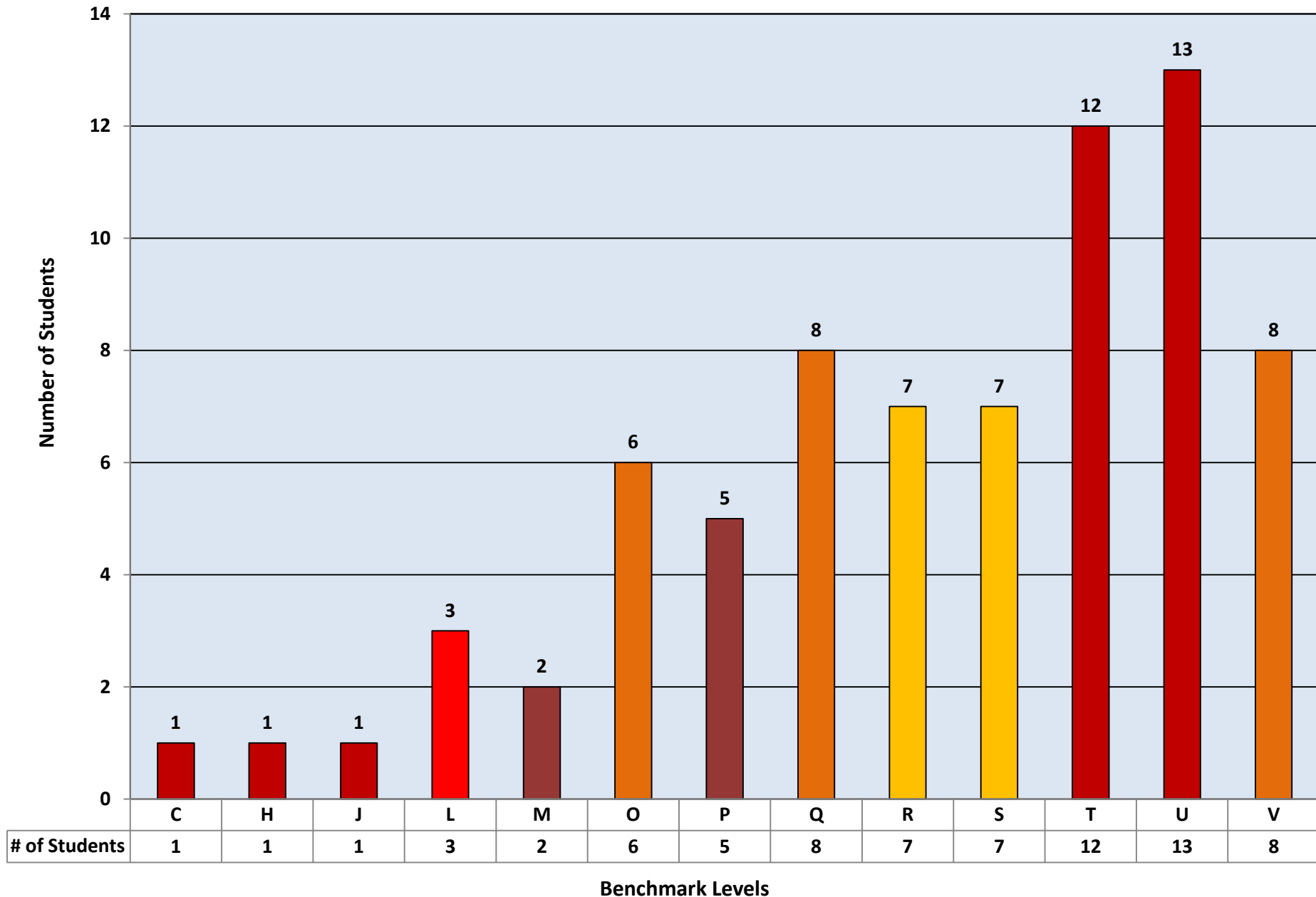


# 6th Grade Benchmark Levels C-Z Ethnic Breakdown

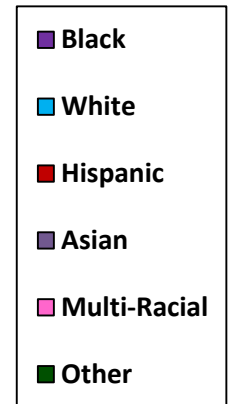
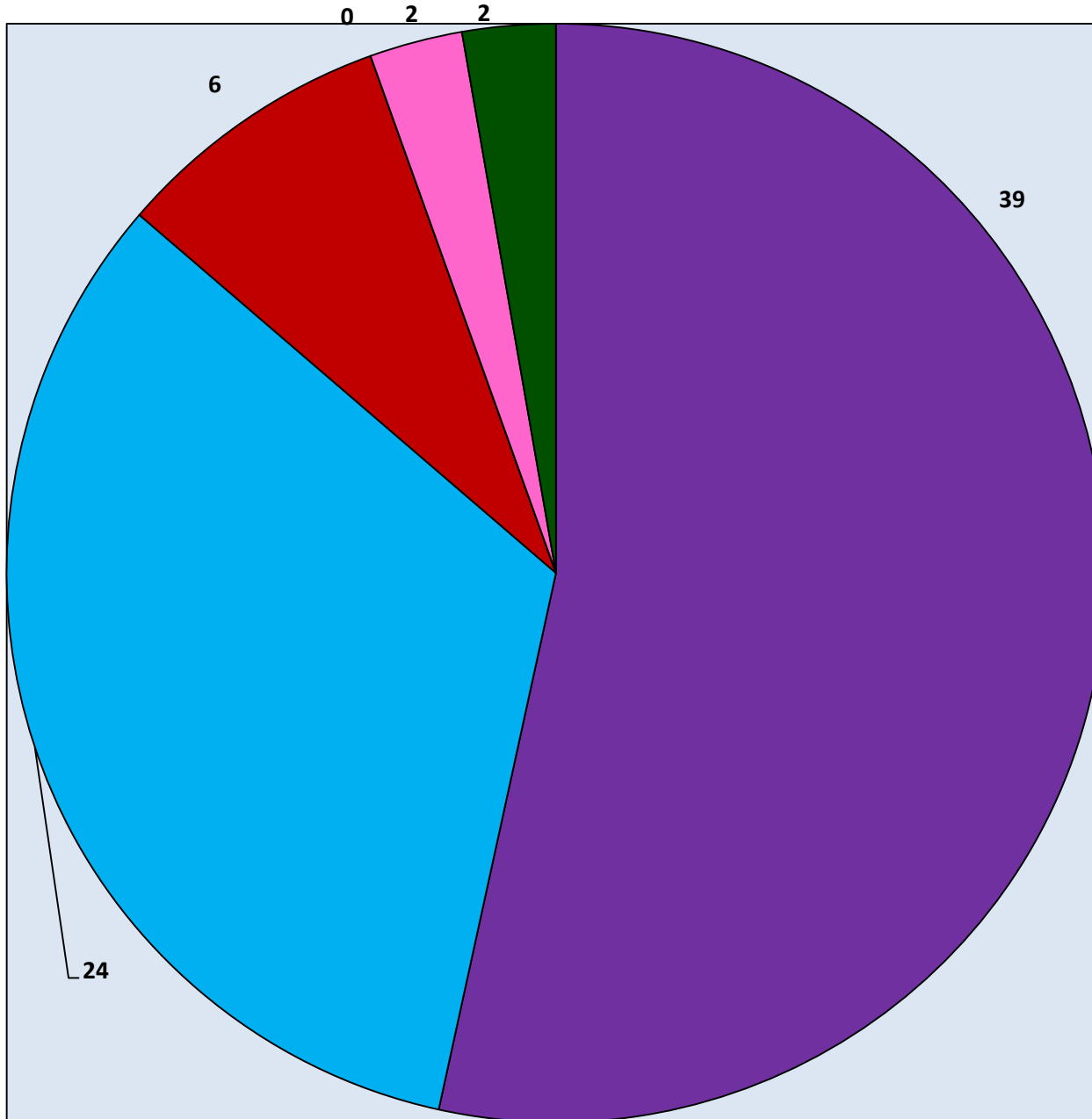




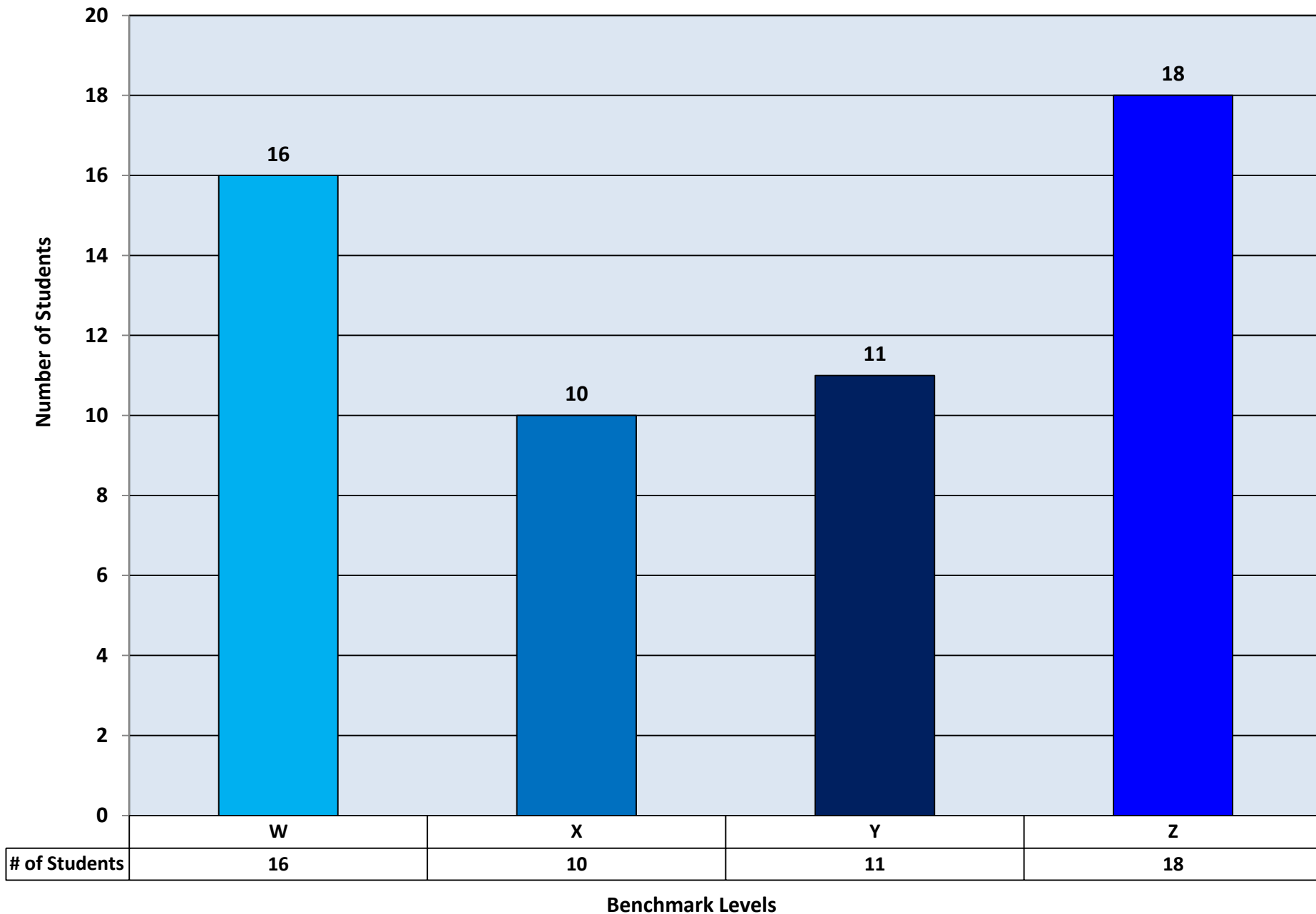
# 6th Grade Benchmark Levels C-V From the End of November



# 6th Grade Benchmark Levels C-V Ethnic Breakdown



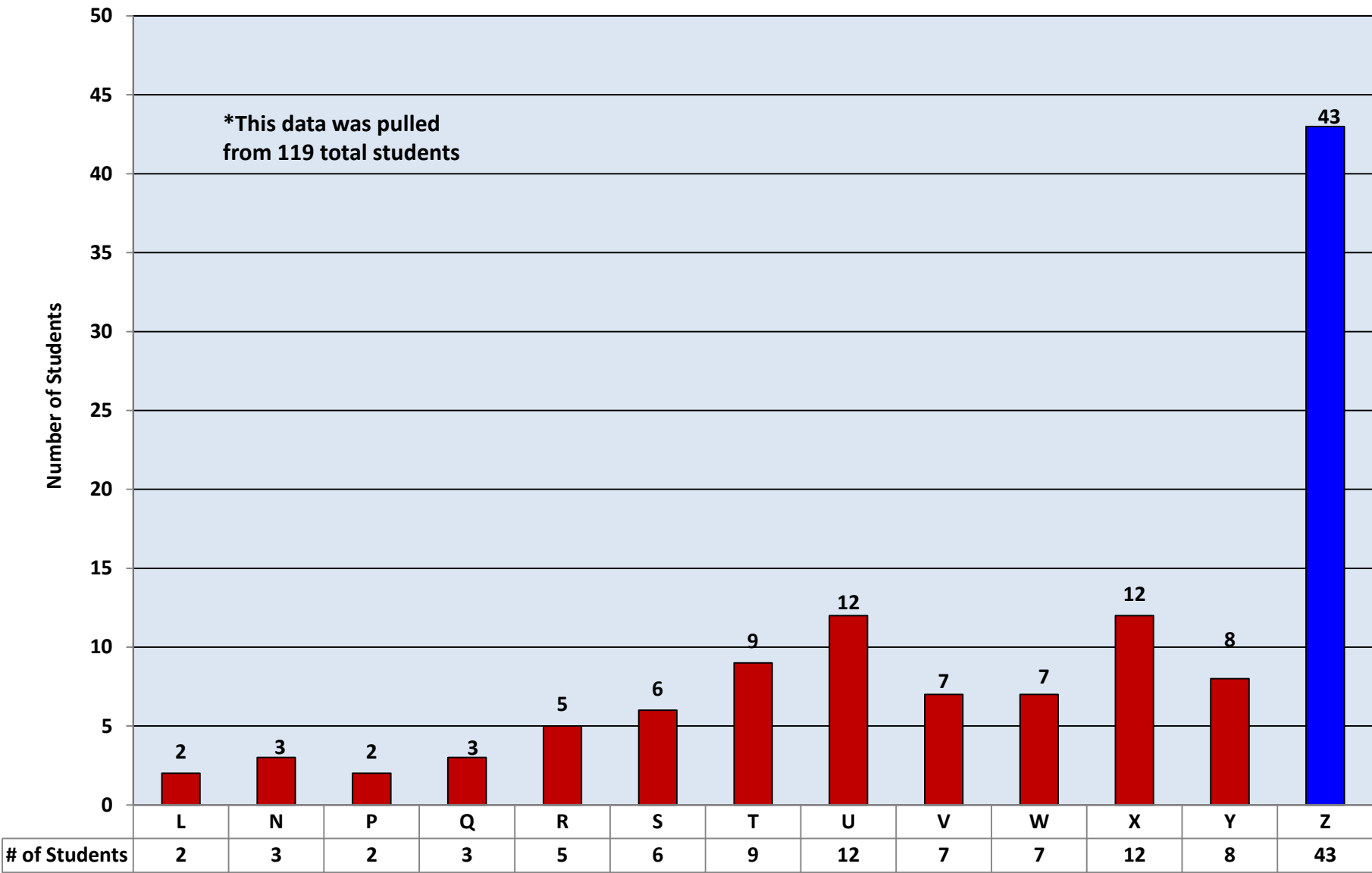
6th Grade Benchmark Levels W-Z  
From the End of November



# **7<sup>th</sup> Grade Benchmark Data**

# 7th Grade Benchmark Levels L-Z

## From the End of November



Benchmark Levels

# **8<sup>th</sup> Grade Benchmark Data**

# 8th Grade Benchmark Levels L-Z

## From the End of November

