



Dorothy L. Bullock Elementary School

Dorothy Bullock School is a wonderful place for children to grow and learn. Our students leave here with a solid foundation in the knowledge, skills, and ethics required to become responsible and productive citizens. We achieve this through the combined efforts of friends, educators, and members of the community.

A Walk Down Memory Lane



- ❖ STAR Student Character Education Recognition Program continues. Over 400 students recognized for outstanding achievement in Character Education. Students were chosen by their classroom teacher and special area teachers. Over 200 parents participate in family assembly.
- ❖ Positive Behavior Supports begins school-wide. Students celebrate first school-wide event. Referrals down from 64 in 2012-13 to 4 in 2013-2014
- ❖ First Grade “DOT” Celebration once again a huge success. Many parent volunteers and over 200 in attendance for the day time activities
- ❖ First grade 1st Musical Assembly a “Rockin” Success! Over 250 family members came out for the day time event.

Grade 1

The size of class(participated in Glassboro Schools K-1 is
164 (fall) 164 (spring)

Students in the first grade scored the following during the
September (Rodger's Benchmark) 2013 guided reading
benchmarks:

73 students were at or below level D

86 students were at level E-J

5 students were above level J

Students in the first grade scored the following during the
February 2014 guided reading benchmarks:

22 students were below level D

101 students were at level E-J

41 students were above level J

Grade 2

The size of class is 126 (fall) 126 (spring) (Gone through k-2)

Students in the second grade scored the following during the September 2013 guided reading benchmarks:

98 students were below level J

28 students were at level K-M

12 students were above level M

Students in the second grade scored the following during the February 2014 guided reading benchmarks:

28 students were below level K

45 students were at level K-M

65 students were above level K

Grade 3

The size of class is 117 (fall) 117 (spring) In Glassboro K-3
Students in the third grade scored the following during
the September 2014 guided reading benchmarks:

45 students were below level M

39 students were at level N-P

33 students were above level P

Students in the third grade scored the following during
the February 2014 guided reading benchmarks:

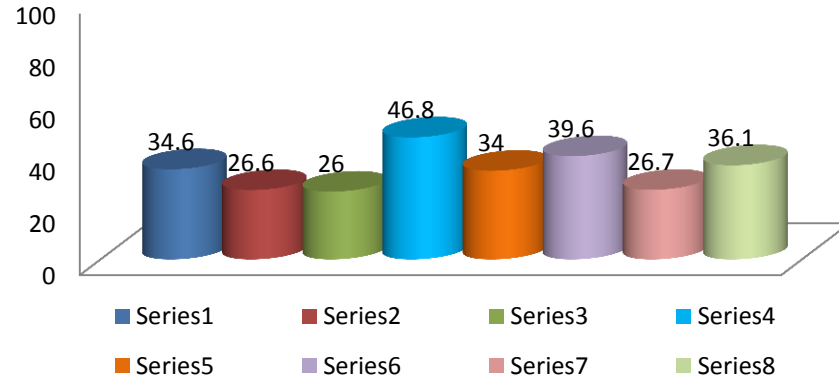
13 students were below level M

50 students were at level N-P

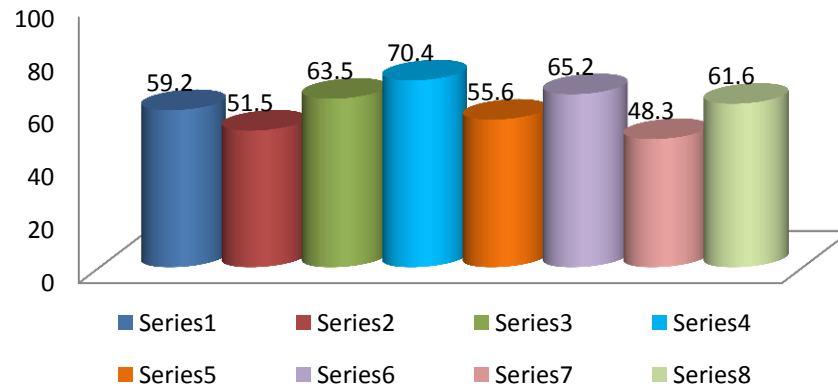
54 students were above level P

DIBELS

1st CLS MEAN BEGINNING

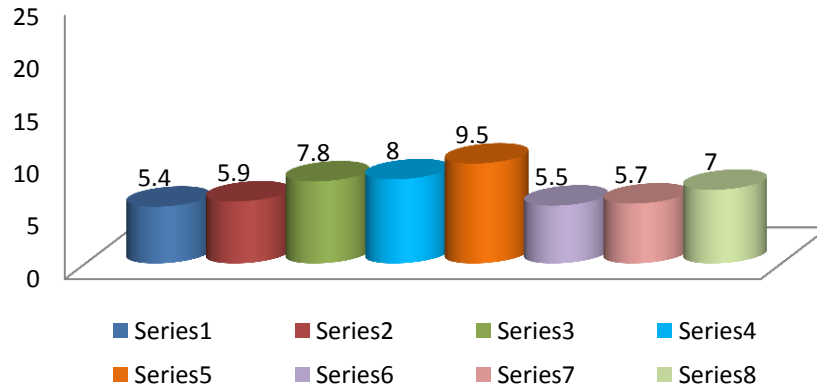


1st CLS MEAN MIDDLE

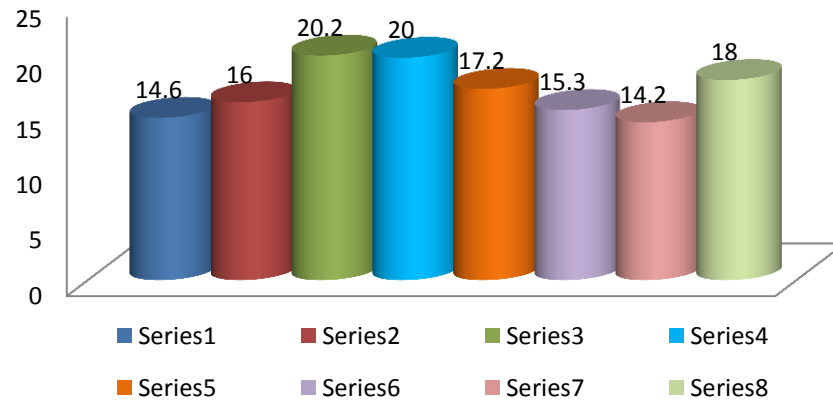


DIBELS

1ST WWR MEAN BEGINNING



1ST WWR MEAN MIDDLE

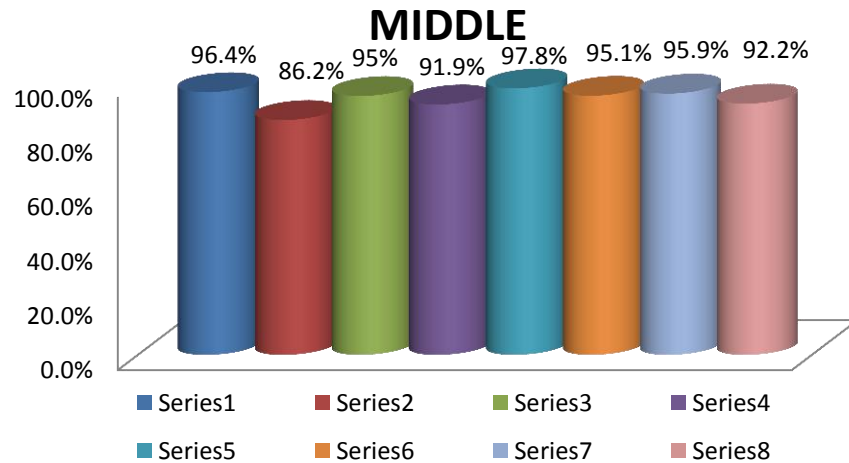


DIBELS

2ND GRADE MEAN ACCURACY

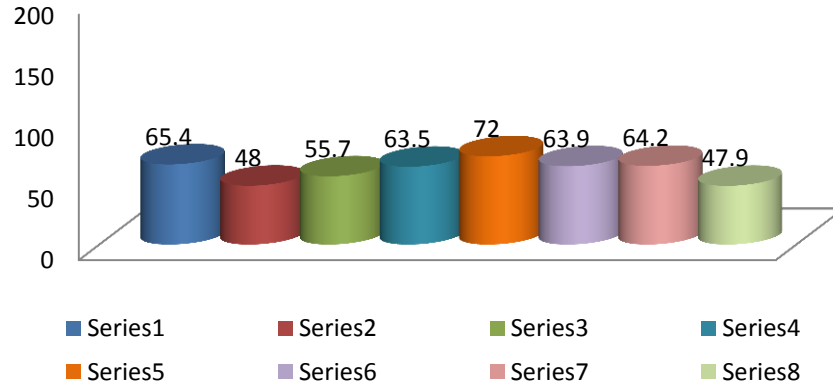


2ND GRADE MEAN ACCURACY

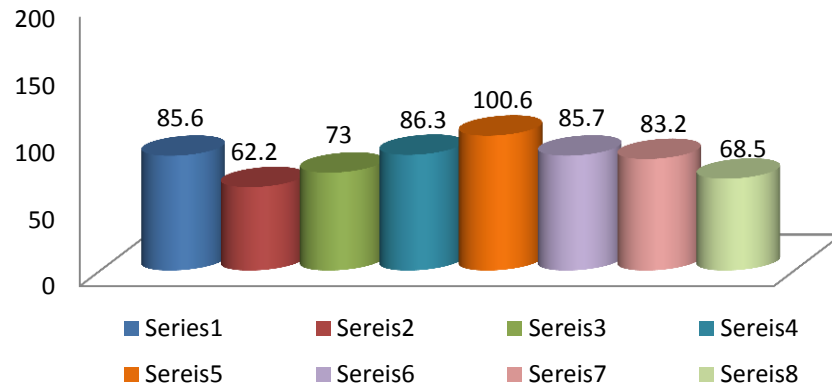


DIBELS

2ND GRADE WC MEAN BEGINNING

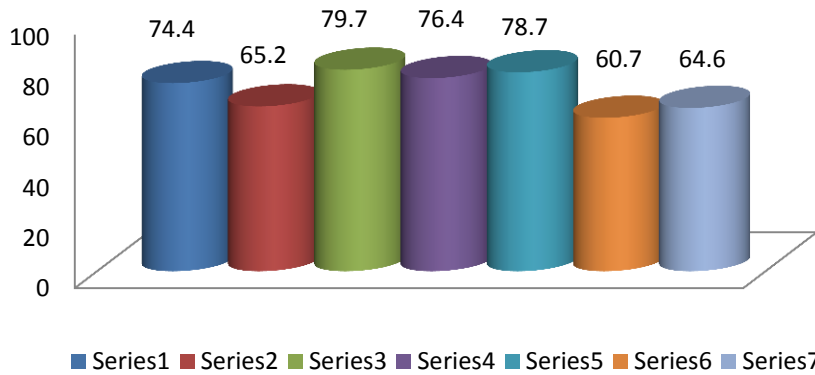


2ND GRADE MEAN WC MIDDLE

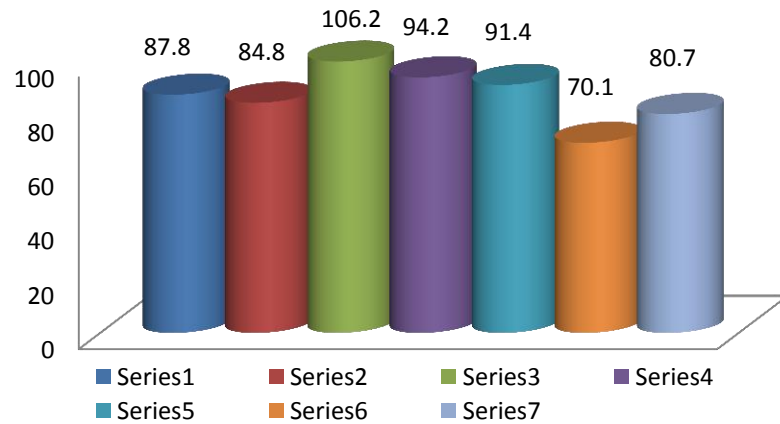


DIBELS

3RD GRADE WC MEAN BEGINNING



WORDS CORRECT MEAN MIDDLE



Where now?



Introduced FUNdations to grades 1 and 2 to strengthen:

- Phonemic awareness
 - Phonics-word study
 - High frequency word study
 - Fluency
 - Vocabulary
 - Handwriting
 - Spelling
 - Continued connection with Kindergarten
-
- Implement FUNdations in Grade 3

Where now?



Positive Behavior Support (PBS) coming in 2014 to Bowe for continuity

Deeper data analysis with STAR reading and STAR math correlations

Continued Teacher training in data analysis

Teacher discussions with Rodger's and Bowe begun

Monster Math After School Club

Increased parent participation

More activities that are fun for students