

# Dorothy L. Bullock School

## May Report

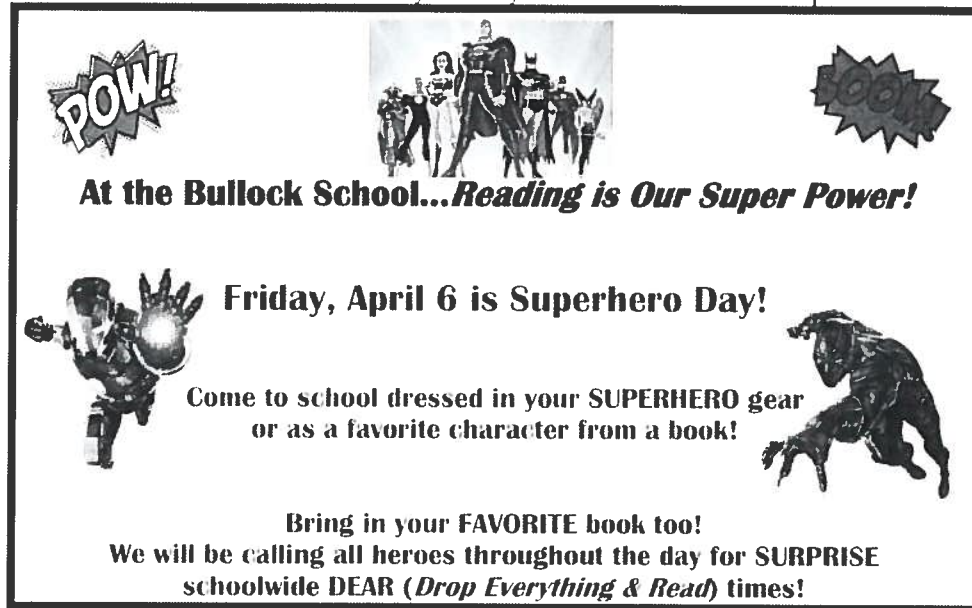
Submitted by: Rich Taibi, Principal

---

Search [#BullockES](#) on Twitter & Facebook for ongoing news about the Bullock School, or visit The Curriculum Corner on [Facebook](#) & [Wordpress](#).

### Educational Happenings & Community Involvement Activities

- What do you do when Spring Break ends early? You make it SUPER! Click [here](#) to learn more about Bullock's SUPER Friday literacy event and to see some pics!



- We are proud of the Bullock students that participated in this year's Science Fair! Thank you to Mr. Brown, Mrs. Budney, Mrs. Bernstiel (and the committee) for another fantastic districtwide event! I am also excited to announce that (for the first time) Bullock also had full "classroom" participants. Click [here](#) to learn more!
- This month we will be celebrating the Bullock Garden's 3<sup>rd</sup> Birthday with some wonderful events. Keep an eye on our various social media platforms to stay up to date with any events!

### **Committee Updates & Professional Development**

- Team/Faculty Meetings & Data Review
  - ELA Curriculum Development
  - Data Review
- Bulldog Buddies Meeting
  - Data Review
  - Review Tier II/Tier III Supports
- PTO Updates
  - Fundraiser Updates
  - Class Trip Planning
  - Principal's Report
- Professional Development (see Monthly Report)

**Facilities & Operations** – See report from Mr. Sole

# Dorothy L. Bullock School

## May Report

Submitted by: Rich Taibi, Principal

---

**Nurse's Report** – *See report from Mrs. Dunn*

### Staff Evaluations

Tenured Certified Staff	8
Non-Tenured Certified Staff	7
Non-Certified Staff	3

### Dates to Remember (Community events are in **bold**)

- 05/01: PARCC Testing Begins (5/1-5/11) & K-6 PBS Meeting
- 05/03: Gr1 Team Meeting
- 05/04: **Bullock Garden B-day Celebration**
- 05/10: Gr2 Team Meeting
- 05/11: CAST Meetings
- 05/24: Gr3 Team Meeting
- 05/30: CAST Meetings
- 05/31: **ELA & Math Family Night**
- 06/01: Bowe Band Visit & Star Student Luncheon

A		B	C	D	E	F	G	H	I	J	K
1	Board report-Bullock nurse	Sep	Oct	Nov	Dec	Jan	Feb	Mar	Apr	May	Jun
2	Health office log #of days/month	18	21	18	16	19	18	18	17		
3	Illness (1a,3a)	154	179	188	131	195	178	172	117		
4	First Aid/injury(1a,3a)	115	315	227	184	203	197	199	223		
5	hygiene/bathroom/clothing issue (1a,3a)	75	116	98	54	85	75	76	55		
6	Head Checks (3a)	25	52	73	2	4	47	27	25		
7	Lice Letters sent home (2a)	25	25	70	0	0	39	25	0		
8	Health Information Counseling (1b,2a,2b)	61	69	55	41	40	39	37	42		
9	gym excuses (1a,3a,1e)	7	10	6	4	3	1	1	7		
10	Exclusions-infectious (1a, 1e)	0	0	0	0	0	1	1	0		
11	Accident reports- Student	3	3	5	1	4	3	6	4		
12	Restraint Assessment Report	0	0	0	1	0	1	1	0		
13	Sent home (1a,1e)	15	38	42	20	37	34	22	23		
14	Referred to physician/hospital (1e)	2	3	3	2	3	0	3	2		
15	Sent to hospital (3d)	0	0	0	0	0	2	0	0		
16	Behavioral counseling (1b, 2a, 2b, 2e)	-				3		2	4		
17	diabetic management (Bloodsugars, insulin, carb counts)	na	na	na	na	na	na	na	na		
18	<b>Medications</b>										
19	Total meds administered (2e,3a,3b,4b)	71	127	129	109	143	143	123	132		
20	Med orders processed (2e,3a,3b,4b)	33	4	7	7	2	2	2	4		
21	Parent education re: meds at school(1b,2a,3a)	12	7	8	5	4	3	4	3		
22	Students needing epi-pens (ordered)	8	13	15	15	16	16	16	17		
23	<b>Screening (2e)</b>										
24	heights/weights (1b,4c)	0	0	0	465	3	4	5	3		
25	height/weight referrals (1b,4c)	0	0	0	0	0	0	0	0		
26	Blood pressures (1b,4c)	5	96	25	64	71	40	44	61		
27	Blood pressure referrals (1b,4c)	0	0	0	0	0	0	0	0		
28	hearing (4c)	5	99	27	65	73	44	52	62		
29	hearing referrals (4c)	0	0	0	0	1	0	1	0		
30	vision (4c)	5	102	27	69	76	52	59	66		



A		B	C	D	E	F	G	H	I	J	K
1	Board report-Bullock nurse	Sep	Oct	Nov	Dec	Jan	Feb	Mar	Apr	May	Jun
2	Health office log #of days/month	18	21	18	16	19	18	18	17		
56	<b>Other</b>										
57	Attendance calls (1c,1e,3a)	42	78	79	83	127	97	84	71		
58	attendance calls outgoing	3	2	3	2	3	4	2	2		
59	Parent calls made (1b,3a,4b)	105	143	139	84	158	137	107	119		
60	Notes sent home (1b,3a,4b)	47	94	86	57	56	59	80	63		
	Conferences/ Collaboration (Teacher, Parent//Administrator/Nurses)	2	3	3	2	4	1	2	2		
61	Parent//Administrator/Nurses										
62	Guidance conference (1b,1c,2a,2b,3a,3f)	0	0	1	1	1	0	1	2		
63	HIB Referral/involvement	0	0	0	0	0	0	0	0		
64	Professional Communication (1d,3f)	2	8	9	5	7	2	2	2		
65	<b>Health Education</b>										
66	Health lesson classes (3c)	0	plan	7 drop in	20 plan	plan	plan	yes	yes		
	Arranged for health lessons outside provider (3c)	plan	plan	2	0 review	plan/2	yes	yes			
68	Parent health education	3	5	5	4	5	3	3	2		
69	ELL outreach/communication (1b,4b)	1	4	5	3	1	2	1	3		
70	Reports submitted	0	2	1	1	1	1	1	1		
71	Hollybush Stars Lessons and Prep	yes	yes	yes	yes	yes	yes	yes	yes		
72	<b>Staff</b>										
73	health office visits (2b)	10	12	9	5	15	15	8	10		
74	Refer to private medical provider (2b)	4	5	2	0	2	2	1	2		
	Workman's comp form completed (1f,2b,2c)	4									
75	Workman's comp referrals (1f,2b,2c)		7	0	2	2	3	5	6		
76	Workman's comp referrals (1f,2b,2c)	2	0	0	0	3	1	1	2		
77	Flu vaccine information provided (2b)	yes	yes	no	no	1	no	no	no		
78	Sent to hospital (3d)	0	0	1	0	1	2	0	1		





